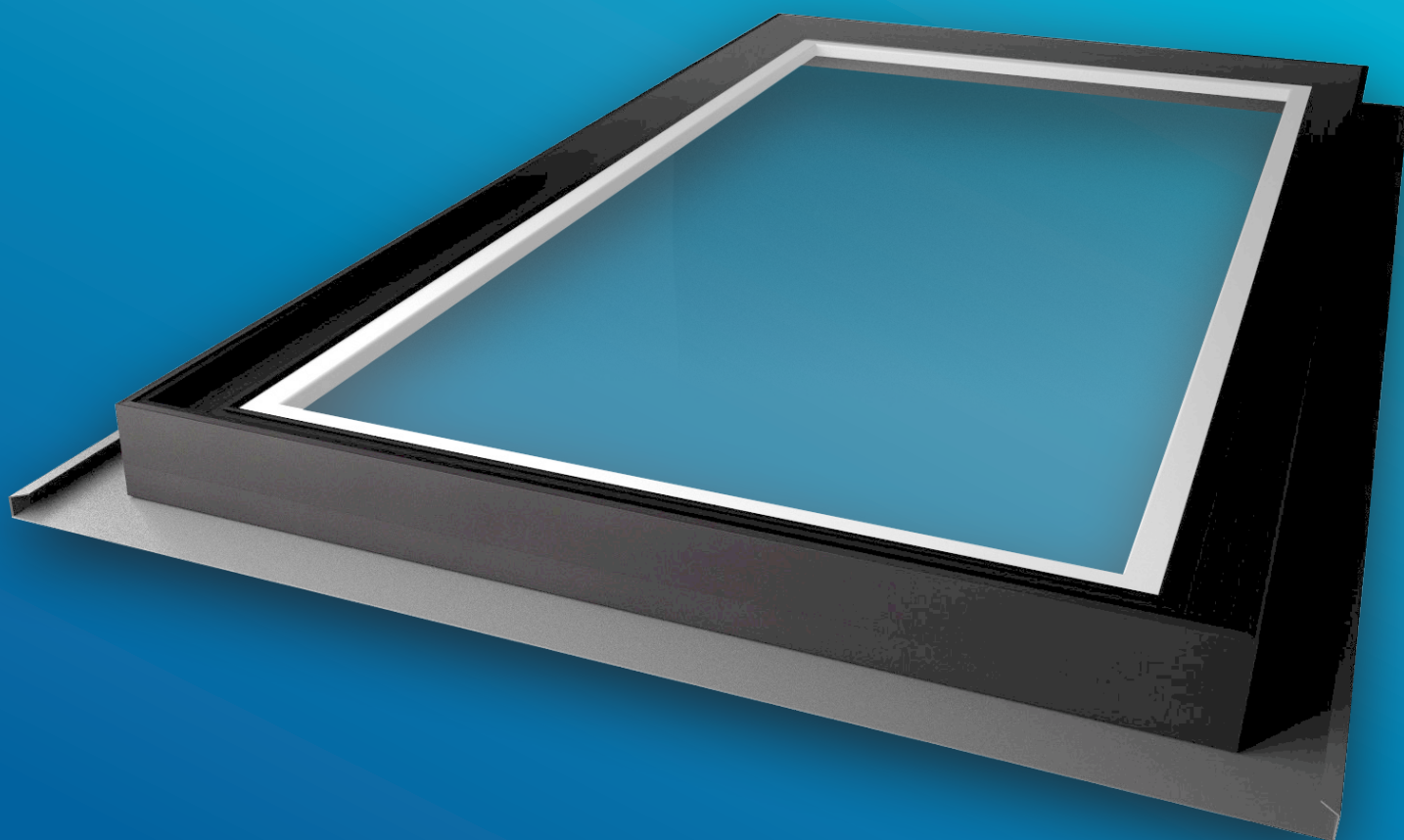


SKYWAY PITCHED

Installation Guide

ROOFGLAZE

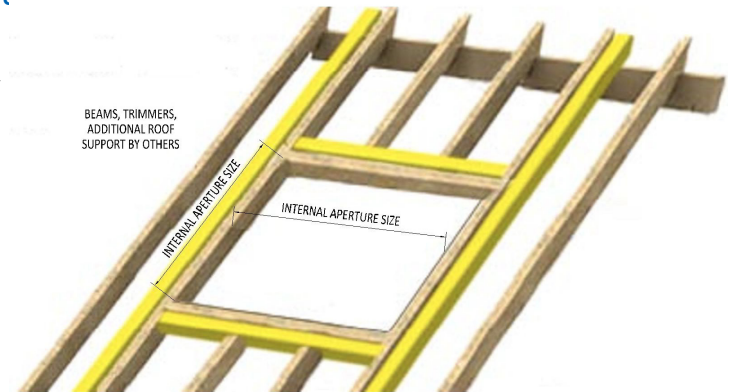
Lighting
by nature™



Skyway Pitched Installation Guide

1 Trimmed roof opening is rooflight order size

The internal dimensions of the aperture created by your trimmers and joists is the rooflight order size.



2 The rooflight

The Rooflight comes fully assembled and ready for installation to fit the roof opening.

3 Roof design

When forming the opening, make sure to consult a competent roofer and or structural engineer to choose the correct size of timber beams, steels and trimmers required.



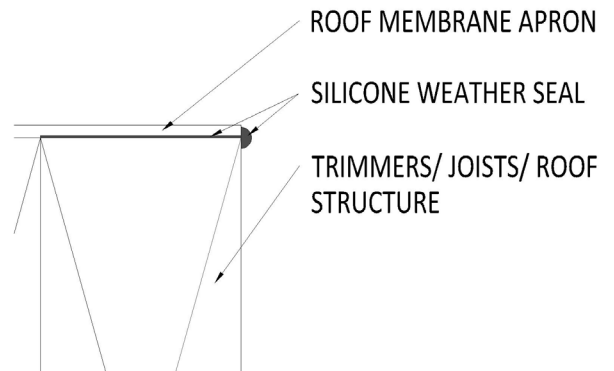
A smart lighting solution for every space

Call us: 01480 474797 Email us: info@roofglaze.co.uk Visit us: roofglaze.co.uk

Skyway Pitched Installation Guide

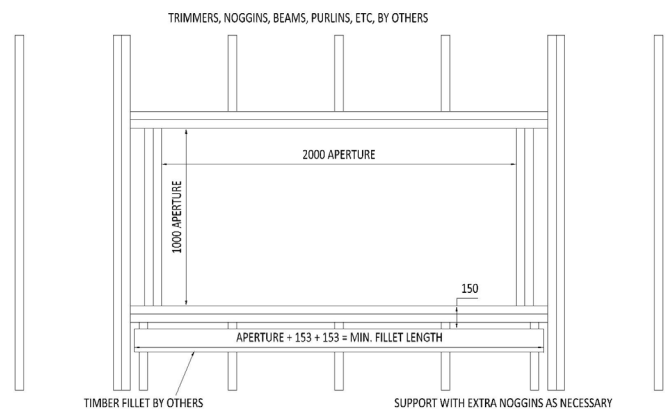
4 Roof membrane aprons

Fit the underlay aprons and make sure that they reach the edge of the opening. Make sure to fully seal the edge of the underlay to the timber with weather seal silicone. Roof, silicone and membranes not by Roofglaze.



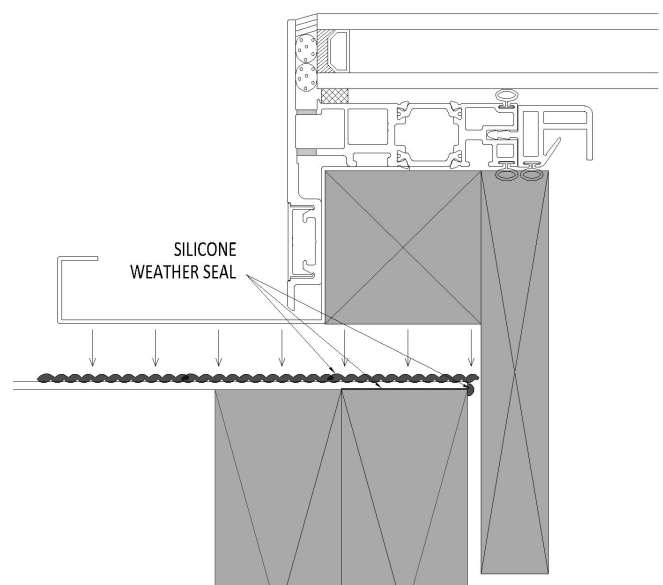
5 Tilting fillet

Fit your timber tilting fillet at the lowest edge of the opening. Fillet not supplied by Roofglaze. The thin end of the wedge should meet the lower tray and the larger end will form the position of the first row of tiles below the opening. The fillet needs to be as wide as the lower tray of the rooflight.



6 Silicone seal between rooflight and aperture

Completely butter the top edge of the aperture apron with silicone, then lower the Rooflight into the structural opening. The silicone must form a complete, unbroken weather seal between the apron and the rooflight at the edge of the structural opening.



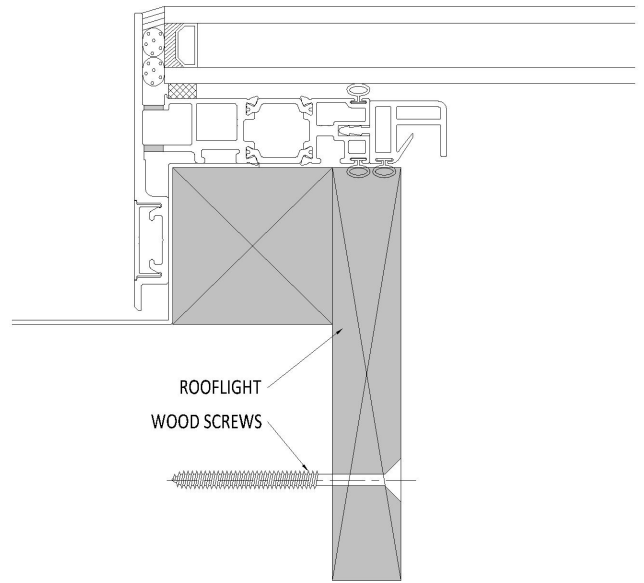
A smart lighting solution for every space

Call us: 01480 474797 Email us: info@roofglaze.co.uk Visit us: roofglaze.co.uk

Skyway Pitched Installation Guide

7 Screw fixings

Fix the Rooflight to the roof structure with appropriate wood screws. Screws should be spaced at approx. 500mm centres for standard wind load areas. For higher wind loads reduce the centres and increase shear strength of fixings accordingly.

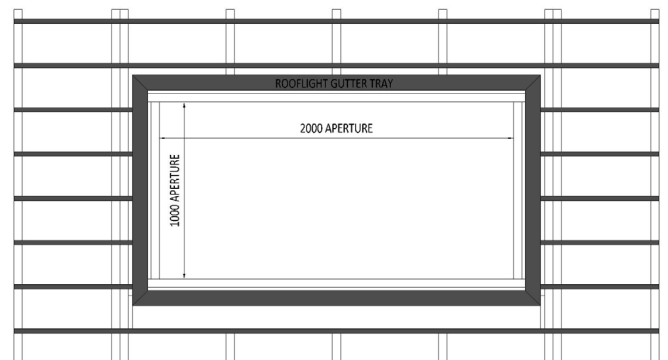


8 Roof membrane

Once rooflight is installed, run a bead of silicone around gutter base to seal it to the apron. Then bring main roof membrane over the aprons, up to and into the gutters and over tilting fillet. Ensure there is sufficient membrane overhang in the gutters to allow sealing at a later stage.

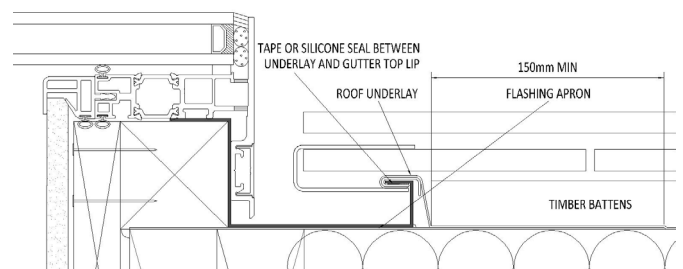
9 Tile battens

Install the roof tile battens. Fix the battens so that they meet the edges of the rooflight gutter tray.



10 Roof membrane sealed into gutter

Once in place, dress the roof membrane into the gutter. Seal the membrane to the top of the gutter tray with silicone or similar. Use clips and soakers as necessary.



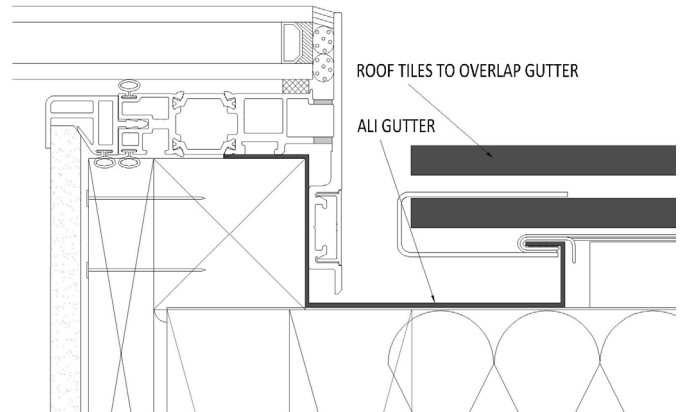
A smart lighting solution for every space

Call us: 01480 474797 Email us: info@roofglaze.co.uk Visit us: roofglaze.co.uk

Skyway Pitched Installation Guide

11 Tile overlap

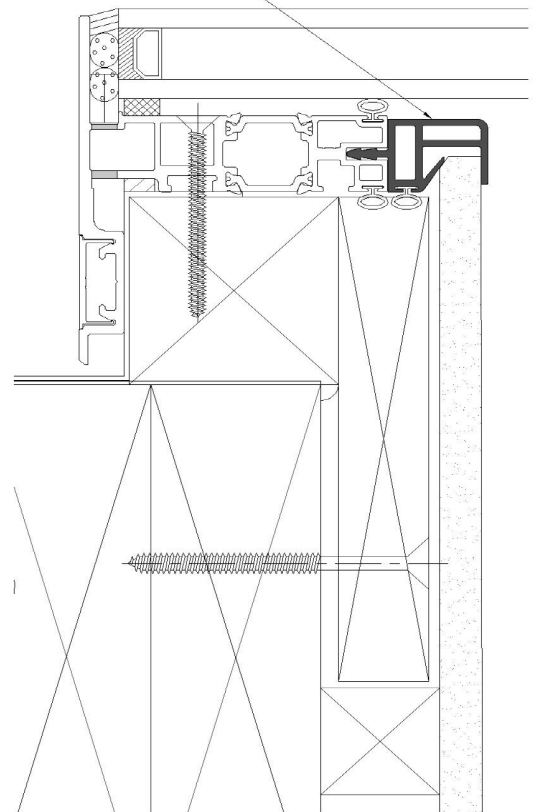
Tile the roof, overlapping the tiles on to the mill finish aluminium gutter. Tile overhang can be adjusted to suit practical / aesthetic requirements. Seal ends of tiles as required.



12 Plasterboard termination

A plasterboard termination point is pre-installed on the rooflight. Depending on internal finishing requirements, packing and/or chamfering of the plasterboard may be required.

PLASTERBOARD TERMINATION



A smart lighting solution for every space

Call us: 01480 474797 Email us: info@roofglaze.co.uk Visit us: roofglaze.co.uk



A smart lighting solution for every space

Call us: 01480 474797 Email us: info@roofglaze.co.uk Visit us: roofglaze.co.uk

ROOFGLAZE

Lighting
by nature™