

NOTES

X NUMBER REQUIRED

GLASS SPEC:
OUTER : HST TOUGHENED GLASS
CAVITY : 16mm ARGON FILLED + WARM EDGE SPACER
INNER : HST TOUGHENED OR LAMINATED GLASS + LOW E COATING
UV RESISTANT SILICONE BONDED

- LIGHT TRANSMISSION = 78 %
- GLASS CENTRE PANE U VALUE = 1.1 W/m².K
- SOLAR G VALUE = 0.63
- GLASS ACOUSTIC REDUCTION = 34 OR 39 Rw dB
- AIR PERMEABILITY = CWCT CLASS A4
- WEATHER RESISTANCE = CWCT CLASS A7
- WIND RESISTANCE = CWCT CLASS E2400
- WEIGHT = XX KG
- AA FIRE-RATED: AA DESIGNATION (NATIONAL CLASS) OR bROOF (T4) EUROPEAN CLASS AND EURO CLASS A1 NON-COMBUSTIBLE

ROOFLIGHT ORDER SIZE = STRUCTURAL INTERNAL OPENING SIZE

GLASS BONDED TO FRAME WITH GLAZING SECURITY TAPE

PRODUCT Ud-VALUE = AS LOW AS 0.4 W/m².K

DESIGN LOADS: 750N/m² WIND 640N/m² SNOW AS STANDARD
OTHER LOADS TO BE SPECIFIED BY CLIENT

ROOF DETAILS SHOWN INDICATIVE. DETAILED DESIGN BY OTHERS.
ALL WATERPROOFING BY OTHERS

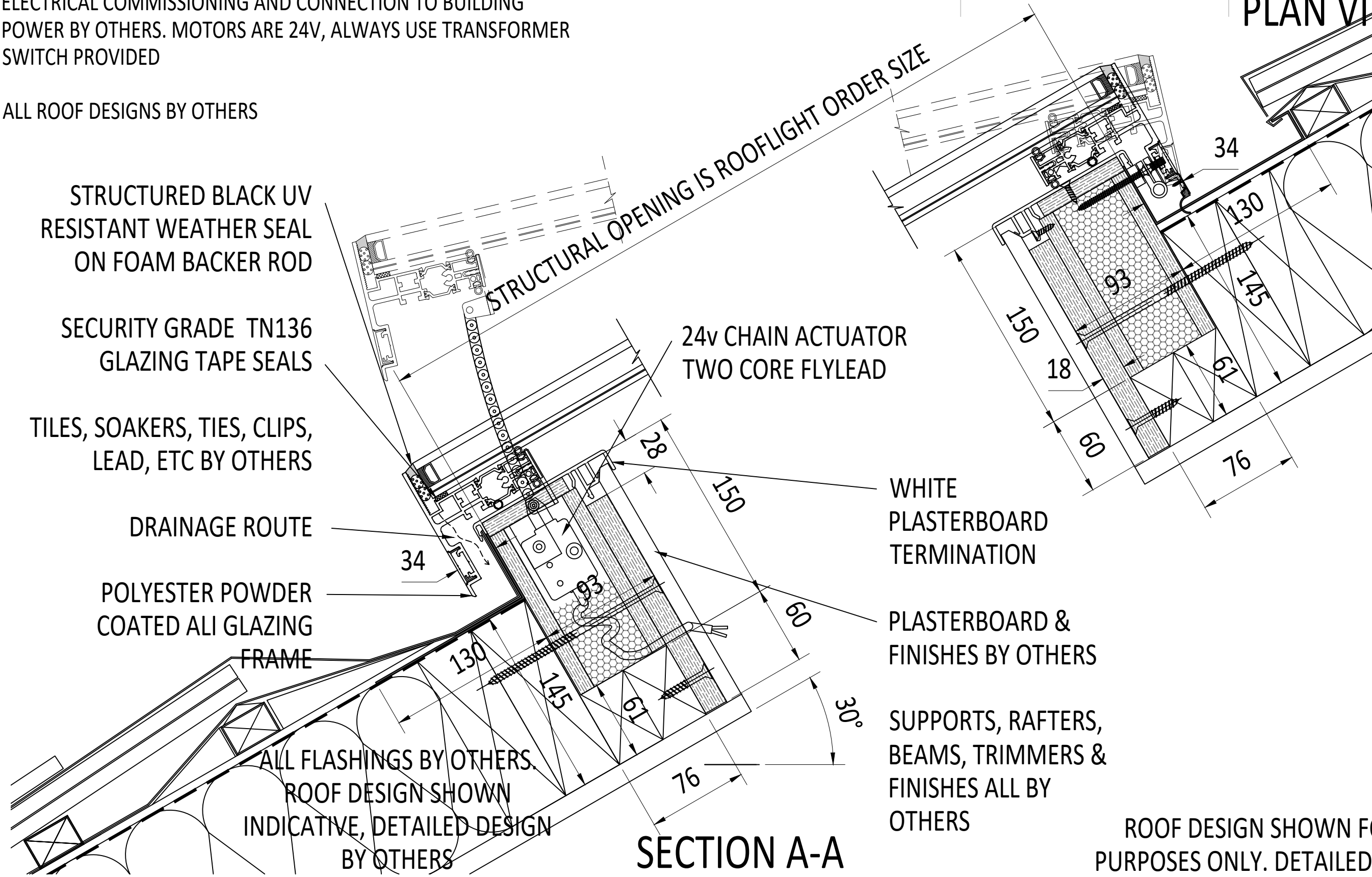
HEAD DETAIL THE SAME AS VERGES. GUTTER TO BE MILL FINISH ALUMINIUM. POWDER COAT AVAILABLE UPON REQUEST

CONTINUOUS FULLY INSULATED TIMBER FIXING KERBS ARE SUPPLIED BY RGR. SIMPLY APPLY SILICONE TO ROOF OPENING, DROP COMPLETED ROOFLIGHT WITH TIMBER FRAME INTO OPENING AND FIX TO STRUCTURE. FINAL WEATHERING BY OTHERS

ELECTRICAL COMMISSIONING AND CONNECTION TO BUILDING POWER BY OTHERS. MOTORS ARE 24V, ALWAYS USE TRANSFORMER SWITCH PROVIDED

ALL ROOF DESIGNS BY OTHERS

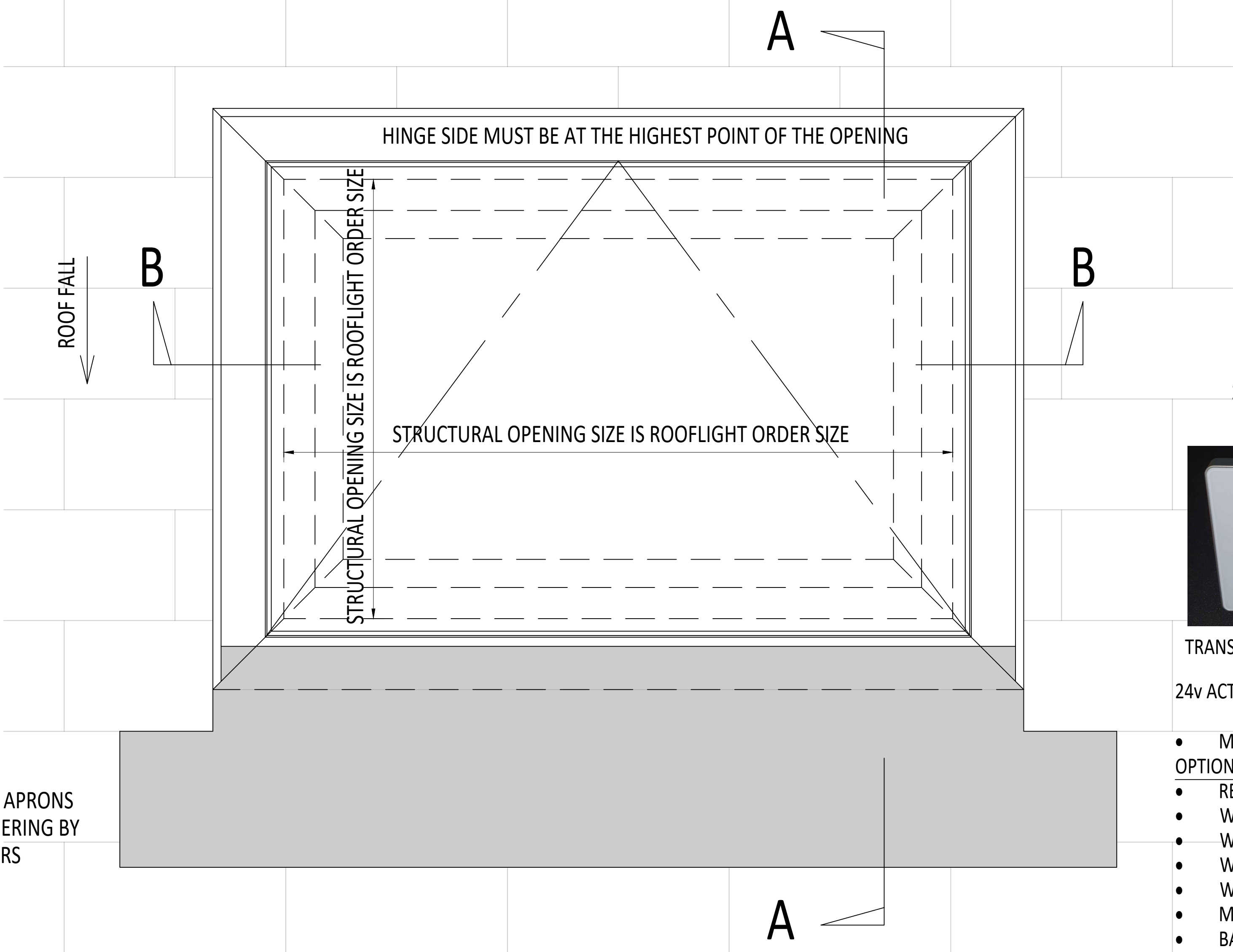
STRUCTURED BLACK UV RESISTANT WEATHER SEAL ON FOAM BACKER ROD
SECURITY GRADE TN136 GLAZING TAPE SEALS
TILES, SOAKERS, TIES, CLIPS, LEAD, ETC BY OTHERS
DRAINAGE ROUTE
POLYESTER POWDER COATED ALI GLAZING FRAME
ALL FLASHINGS BY OTHERS.
ROOF DESIGN SHOWN INDICATIVE, DETAILED DESIGN BY OTHERS



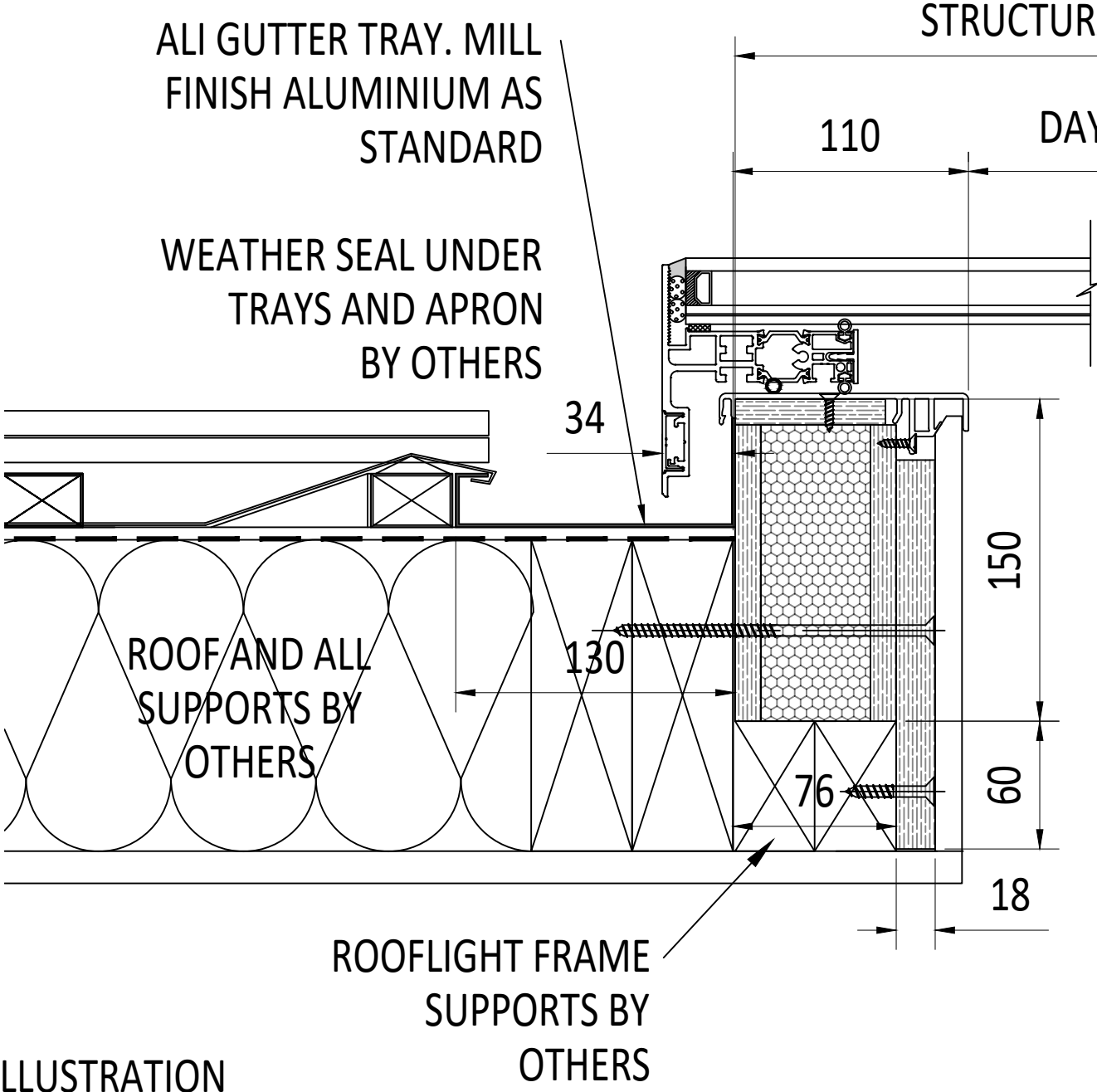
SECTION A-A

ROOF DESIGN SHOWN FOR ILLUSTRATION PURPOSES ONLY. DETAILED DESIGN BY OTHERS.

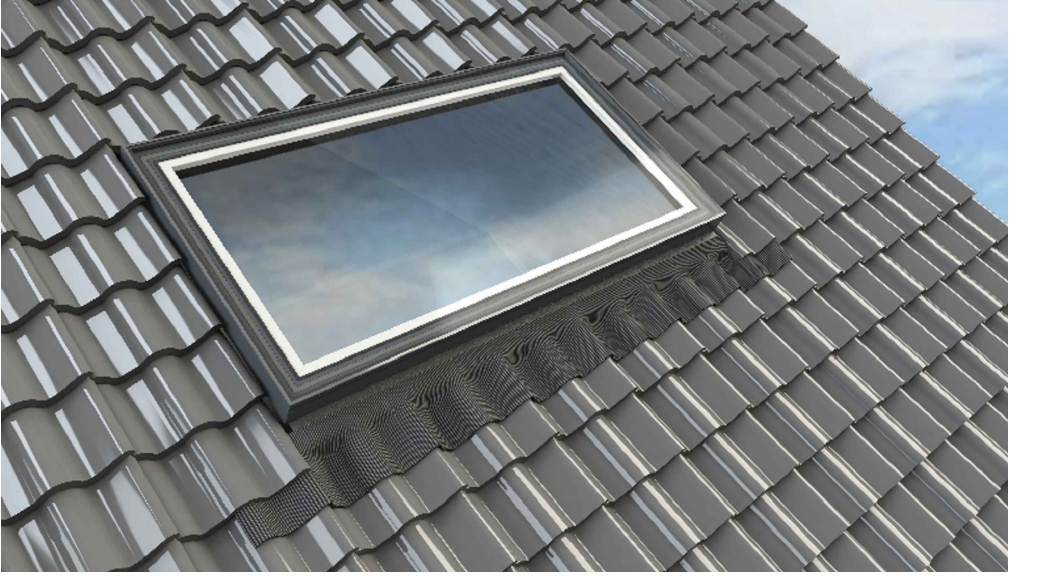
FLASHINGS, APRONS AND WEATHERING BY OTHERS



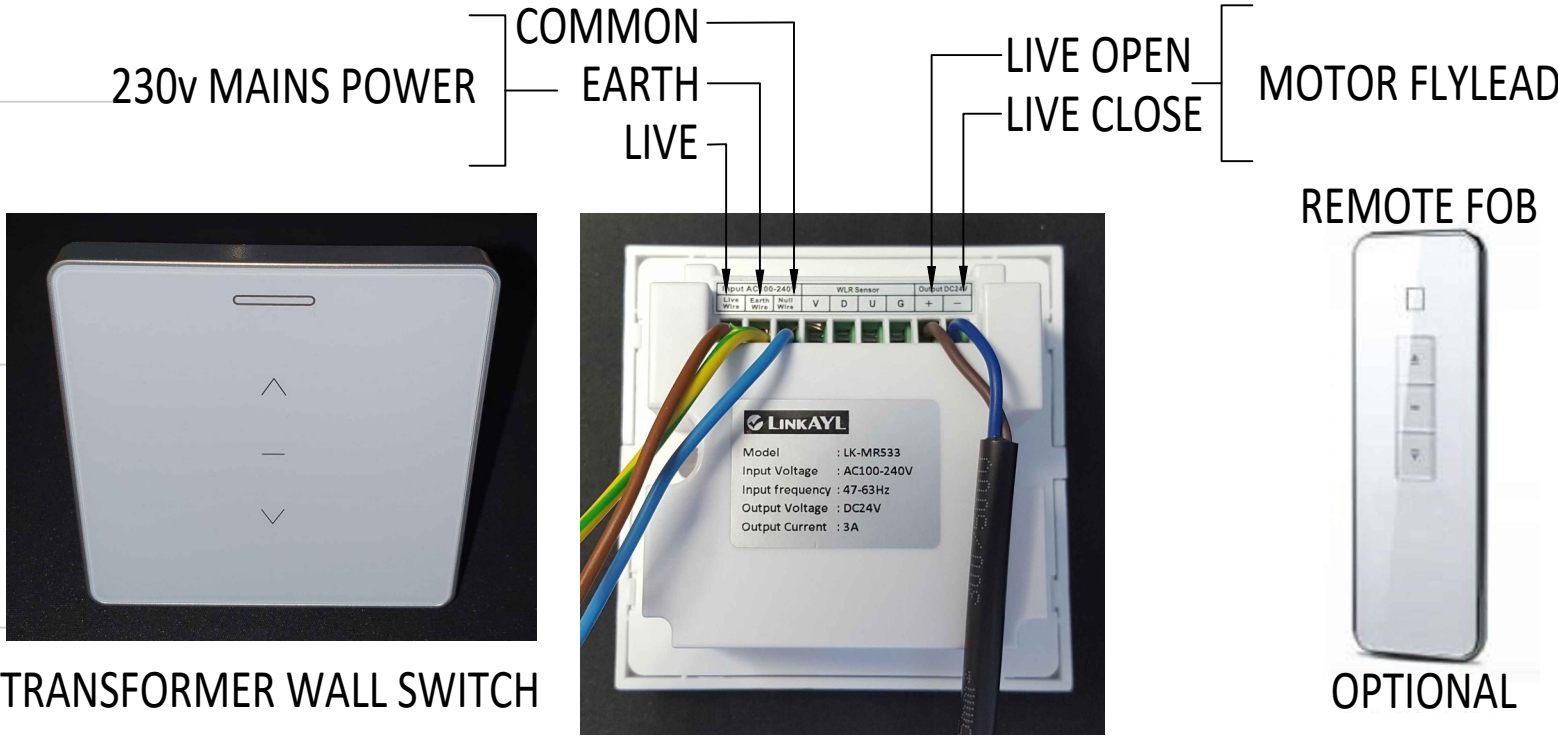
PLAN VIEW - TRUE VIEW ON SLOPE



SECTION B-B



ROOF DESIGN BY OTHERS



24v ACTUATOR WITH TRANSFORMER SWITCH OPTIONS:

- MANUAL WALL SWITCH (STANDARD)
- OPTIONAL EXTRAS
 - REMOTE FOB
 - WIRED RAIN SENSOR
 - WIRELESS RAIN SENSOR
 - WIND AND RAIN SENSOR
 - WI-FI WALL SWITCH WITH SMART APP
 - MULTI-UNIT CONTROL PANEL
 - BATTERY BACK-UP CONTROL PANEL
- REMOTE SWITCH
- SLAVE SWITCH
- MULTI-CHANNEL OPTIONS

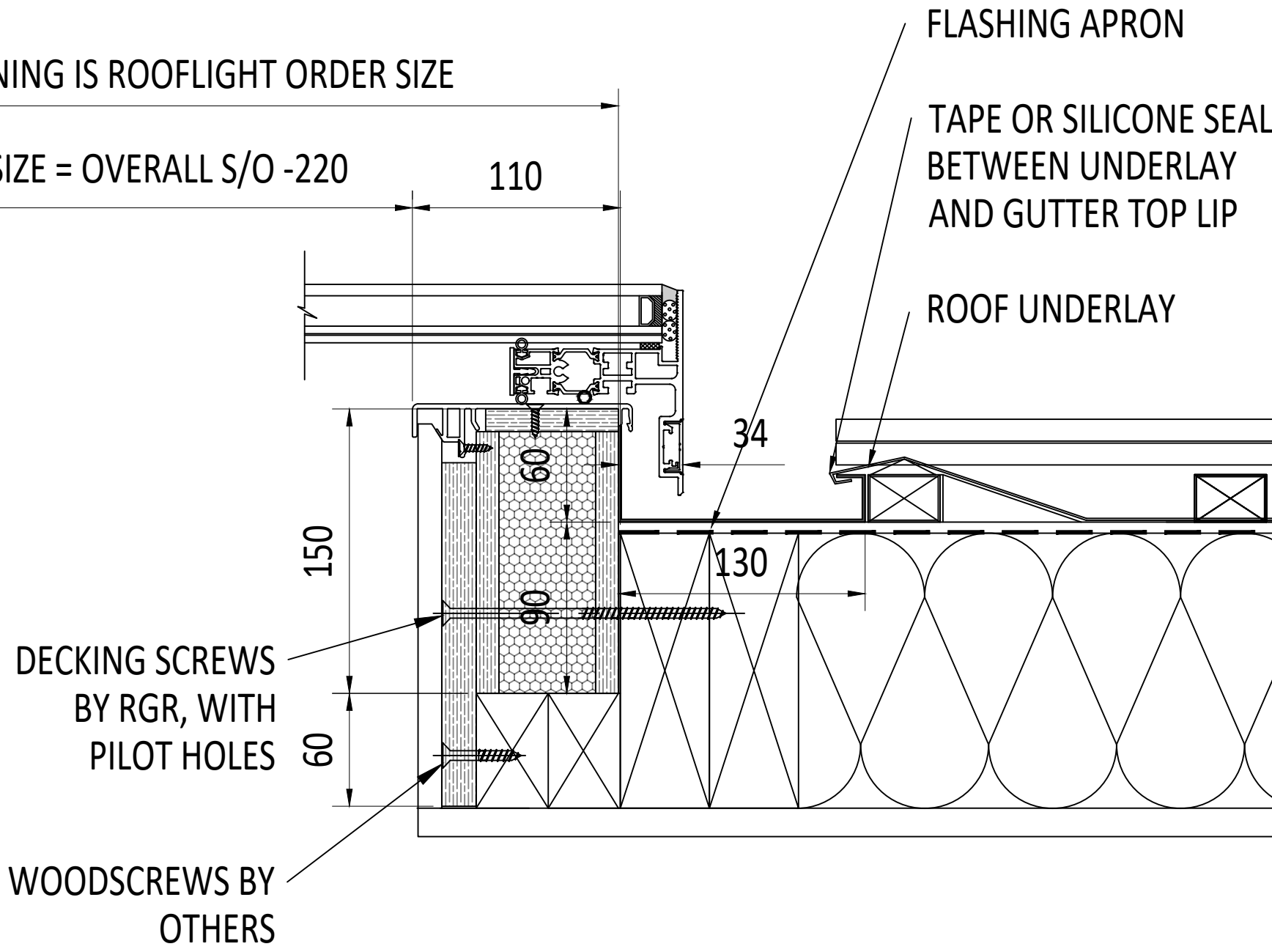
WIRED OR WIRELESS RAIN SENSOR



OPTIONAL

MOTOR & SENSOR FLY LEADS MUST BE WIRED BACK TO SWITCH.

MOTOR FLY LEAD EXITS FRAME CENTRALLY OPPOSITE THE HINGE SIDE.



IF IN DOUBT ASK DO NOT SCALE	IT IS THE RESPONSIBILITY OF THE KERB DESIGNER TO ENSURE THE KERB WILL BE STRUCTURALLY ADEQUATE TO HOLD THE ROOFLIGHT. KERBS SHOWN ON THESE DRAWINGS ARE FOR ILLUSTRATION PURPOSES ONLY.	The manufacturer would advise an installation with a minimum pitch of 5° for rooflight units to minimize water pooling. Whilst the product can be installed flat without detriment to the warranties, the manufacturer cannot be held responsible for any excessive pooling of water to the surface of the rooflight, post installation, if installed without an adequate fall, larger units may require a greater fall. The final decision on amount of fall required must be made by the client and relayed to the installer.	THIS DRAWING MUST NOT BE COPIED OR PASSED TO A THIRD PARTY WITHOUT WRITTEN CONSENT FROM THE MANUFACTURER.	CHECKED	R. P.	TOLERANCE UNLESS OTHERWISE STATED	ALUMINIUM & GLASS	REV	AMENDMENTS	SIGNED	CHECKED	DATE	Roofglaze Rooflights Ltd, 11 Howard Road, Eaton Socon, St Neots, Cambs, PE19 8ET Telephone 01480 474797	DRAWING N°.	RGR-IP-23-704	REV	RoofGLAZE														
				DATE	11-10-2023	DIMENSIONS IN	MILLIMETRES																								
				DRAWN	D. P.	SCALE	1:3, 1:6 @ A1																								
				DATE	11-10-2023		MARINE GRADE POLYESTER POWDER COAT OPTIONS: RAL 7016 ANTHRACITE GREY or RAL 9005 BLACK, 30% GLOSS (MATT)																								
SKYWAY OPENING PITCHED FLATGLASS																		TITLE:		SKYWAY OPENING PITCHED FLATGLASS		SIZE: A 1	Lighting by nature™								