

NOTES

XXX NUMBER REQUIRED

GLASS SPEC:
OUTER : 6mm HST TOUGHENED GLASS
CAVITY : 16mm ARGON FILLED + WARM EDGE SPACER
INNER : 6mm HST TOUGHENED OR 8.8mm LAMINATED GLASS + LOW E COATING
UV RESISTANT SILICONE BONDED

- LIGHT TRANSMISSION = 78 %
- CENTRE PANE U VALUE = 1.1 W/m².K
- SOLAR G VALUE = 0.63
- ACOUSTIC REDUCTION = 34 (6/6) 39 (6/8.8) Rw dB
- AIR PERMEABILITY = CWCT CLASS A4
- WEATHER RESISTANCE = CWCT CLASS A7
- WIND RESISTANCE = CWCT CLASS E2400
- WEIGHT = IS SIZE DEPENDANT
- AA FIRE-RATED: AA DESIGNATION (NATIONAL CLASS) OR bROOF (T4) EUROPEAN CLASS AND EURO CLASS A1 NON-COMBUSTIBLE

ROOFLIGHT ORDER SIZE = STRUCTURAL INTERNAL OPENING SIZE.

GLASS BONDED TO FRAME WITH GLAZING SECURITY TAPE.

PRODUCT U-VALUE = AS LOW AS 0.4 W/m².K

DESIGN LOADS: 750N/m² WIND 640N/m² SNOW AS STANDARD
OTHER LOADS TO BE SPECIFIED BY CLIENT.

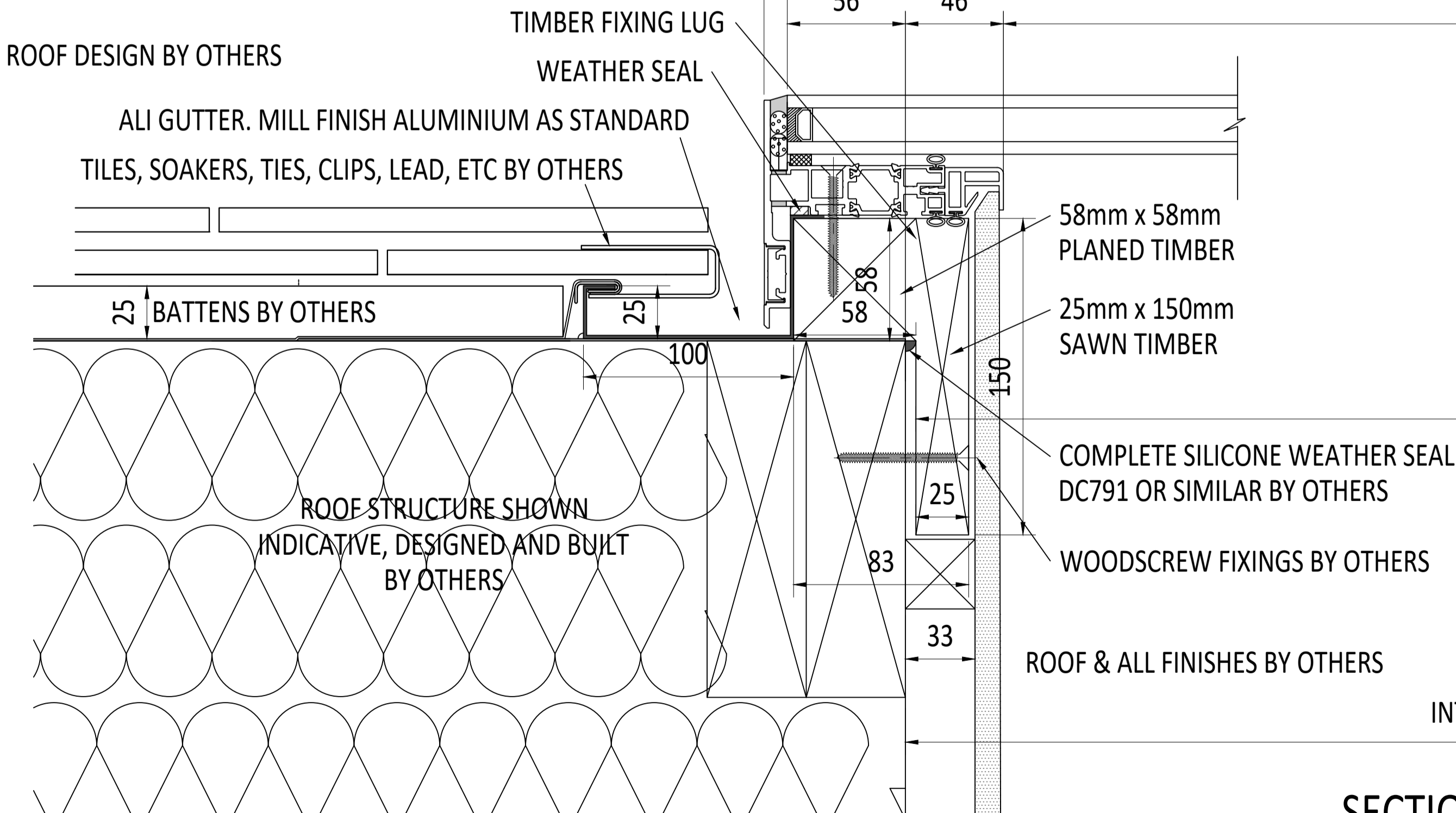
ROOF DETAILS SHOWN INDICATIVE. DETAILED DESIGN BY OTHERS.
ALL WATERPROOFING BY OTHERS.

HEAD DETAIL THE SAME AS VERGES. GUTTER TO BE MILL FINISH ALUMINIUM. POWDER COAT AVAILBLE UPON REQUEST.

CONTINUOUS TIMBER FIXING LUGS ARE SUPPLIED BY RGR. SIMPLY APPLY SILICONE TO ROOF OPENING, DROP COMPLETED ROOFLIGHT WITH TIMBER FRAME INTO OPENING AND FIX TO STRUCTURE. FINAL WEATHERING BY OTHERS.

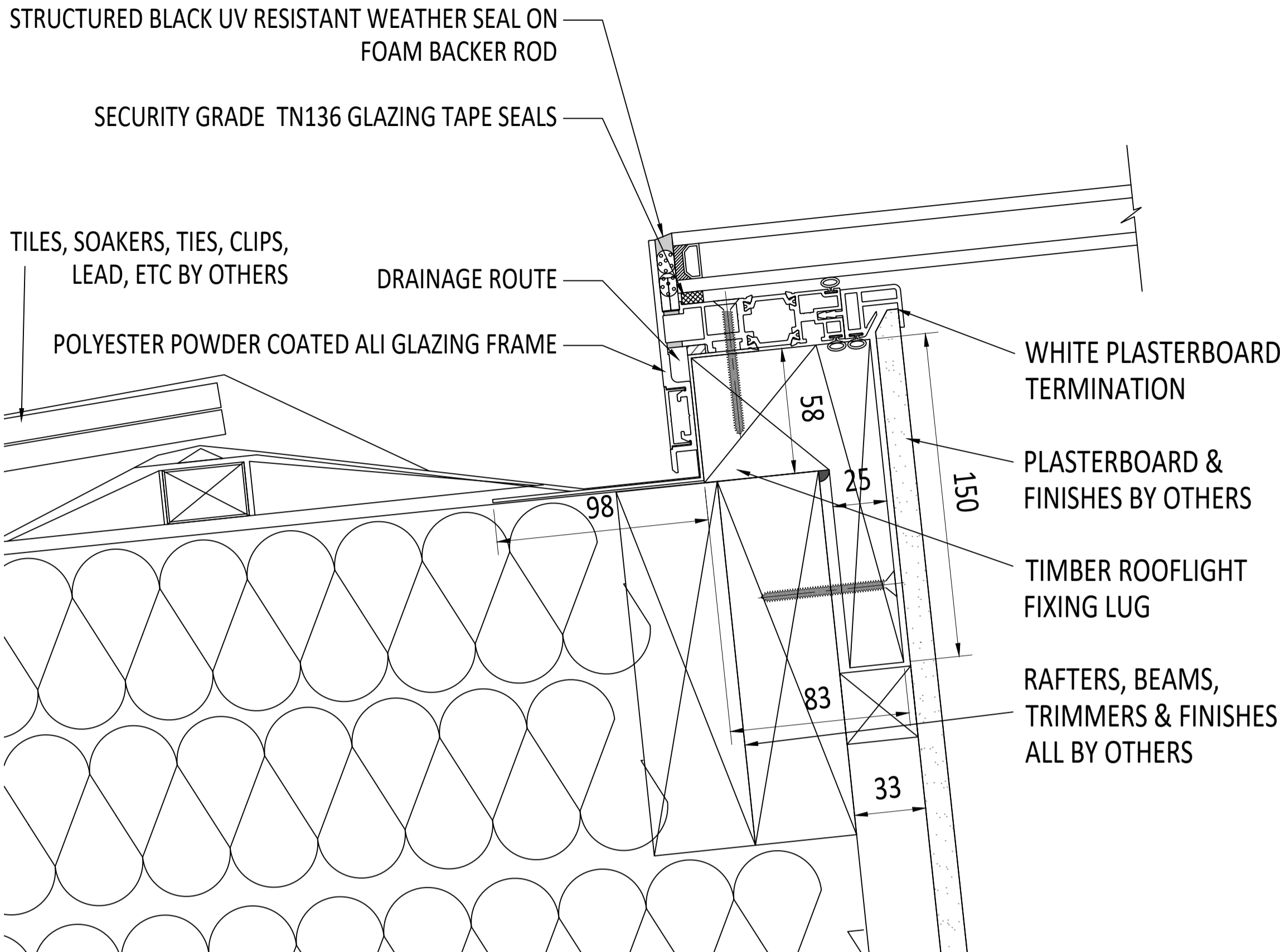
RGR WOULD RECOMMEND INSULATION TO INSIDE OF FIXING LUG.

ROOF DESIGN BY OTHERS

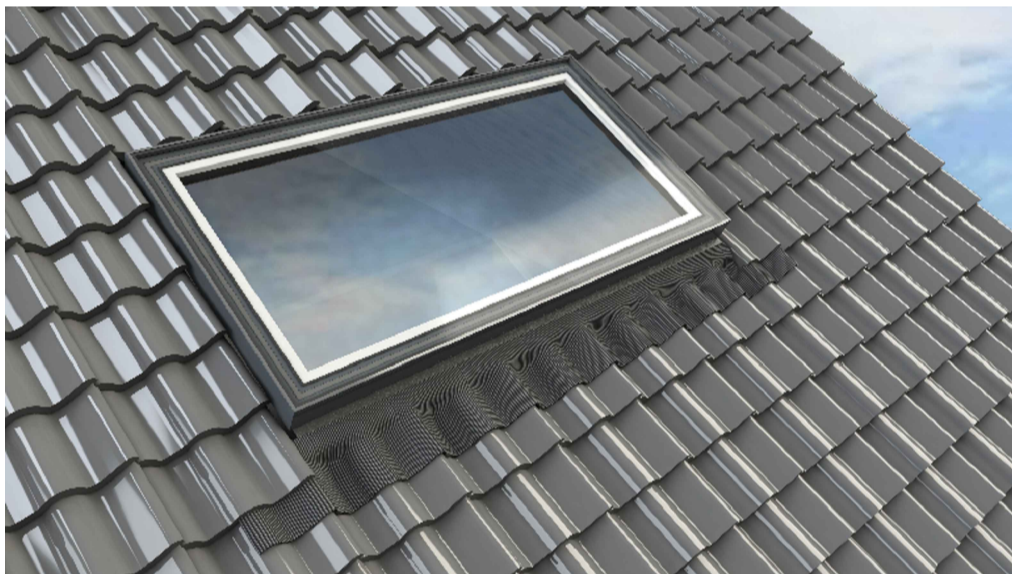


SECTION A-A VERGE AND HEAD DETAILS

PLAN VIEW - TRUE VIEW ON SLOPE



SECTION B-B EAVES DETAIL



ROOF DESIGN BY OTHERS

FRAME SIZE = S/O + 134

GLASS SIZE = FRAME SIZE - 22

VISIBLE GLASS SIZE = S/O - 92

FIXING TIMBERS = INTERNAL OPENING - 10

INTERNAL STRUCTURAL OPENING = (ORDER SIZE)

IF IN DOUBT ASK DO NOT SCALE

SKYWAY™

IT IS THE RESPONSIBILITY OF THE KERB DESIGNER TO ENSURE THE KERB WILL BE STRUCTURALLY ADEQUATE TO HOLD THE ROOFLIGHT. KERBS SHOWN ON THESE DRAWINGS ARE FOR ILLUSTRATION PURPOSES ONLY.

The manufacturer would advise an installation with a minimum pitch of 5° for rooflight units to minimize water pooling. Whilst the product can be installed flat without detriment to the warrantee, the manufacturer cannot be held responsible for any excessive pooling of water to the surface of the rooflight, post installation, if installed without an adequate fall, larger units may require a greater fall. The final decision on amount of fall required must be made by the client and relayed to the installer.

THIS DRAWING MUST NOT BE COPIED OR PASSED TO A THIRD PARTY WITHOUT WRITTEN CONSENT FROM THE MANUFACTURER.

CHECKED
DATE
DRAWN
DATE

D. PUGH

12-10-2021

C. MORGAN

12-10-2021

TOLERANCE UNLESS OTHERWISE STATED +/- 5mm
DIMENSIONS IN
SCALE

1:2, 1:10 @ A1

MATERIAL
ALUMINIUM & GLASS
FINISH
MARINE GRADE POLYESTER
POWDER COAT OPTIONS: RAL 7016
ANTHRACITE GREY, RAL 9005 BLACK,
30% GLOSS (MATT)

REV
AMENDMENTS
SIGNED
CHECKED
DATE

Roofglaze Rooflights Ltd,
11 Howard Road, Eaton Socon,
St Neots, Cambs, PE19 8ET
Telephone 01480 474797

TITLE:
SKYWAY PITCHED FLATGLASS

DRAWING N°:
RGR-IP-21-700

REV

SIZE

A 1

ROOFGLAZE
Lighting
by nature™