

## NOTES

xxx NUMBER REQUIRED

GLASS SPEC:  
OUTER : 6mm HST TOUGHENED GLASS  
CAVITY : 16mm ARGON FILLED + WARM EDGE SPACER + DC3363 UV RESISTANT SILICONE EDGE SEAL  
INNER : 6mm HST TOUGHENED GLASS + LOW E COATING OR 8.8mm LAMINATED + GROUND EDGES  
*RRR HIGHLY RECOMMENDS A CWCT CLASS 1 OR CLASS 2 NON-FRAGILE OPTION FOR MOST ROOFLIGHTS*

- LIGHT TRANSMISSION = 78 %
- CENTRE PANE U VALUE = 1.1 W/m<sup>2</sup>.K
- SOLAR G VALUE = 0.63
- ACOUSTIC REDUCTION = 34 (6/6) 39 (8.8) Rw dB
- AIR PERMEABILITY = CWCT CLASS A4
- WEATHER RESISTANCE = CWCT CLASS A7
- WIND RESISTANCE = CWCT CLASS E2400
- WEIGHT = XXX
- AA FIRE-RATED: GLASS AND FRAME ARE AA DESIGNATION (NATIONAL CLASS) OR bROOF (T4) EUROPEAN CLASS AND EURO CLASS A1 NON-COMBUSTIBLE (NOT TIMBER KERB)
- PRODUCT Ud-VALUE = XXX W/m<sup>2</sup>.K. THIS IS A COMBINED Ud-VALUE OF KERB AND ROOFLIGHT TOGETHER.

ROOFLIGHT ORDER SIZE = ROOF STRUCTURAL OPENING SIZE MEASURED ON-PLAN.

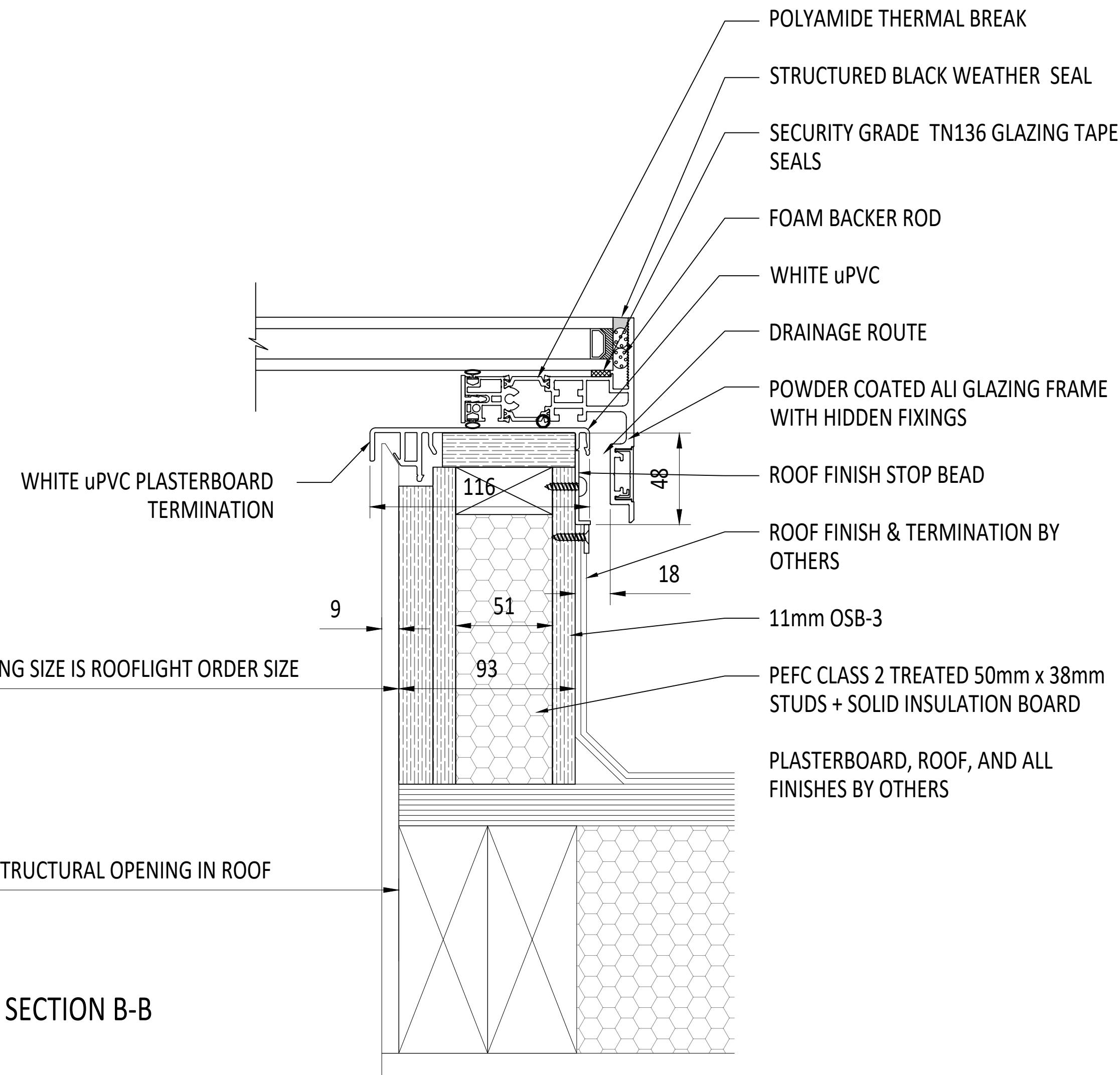
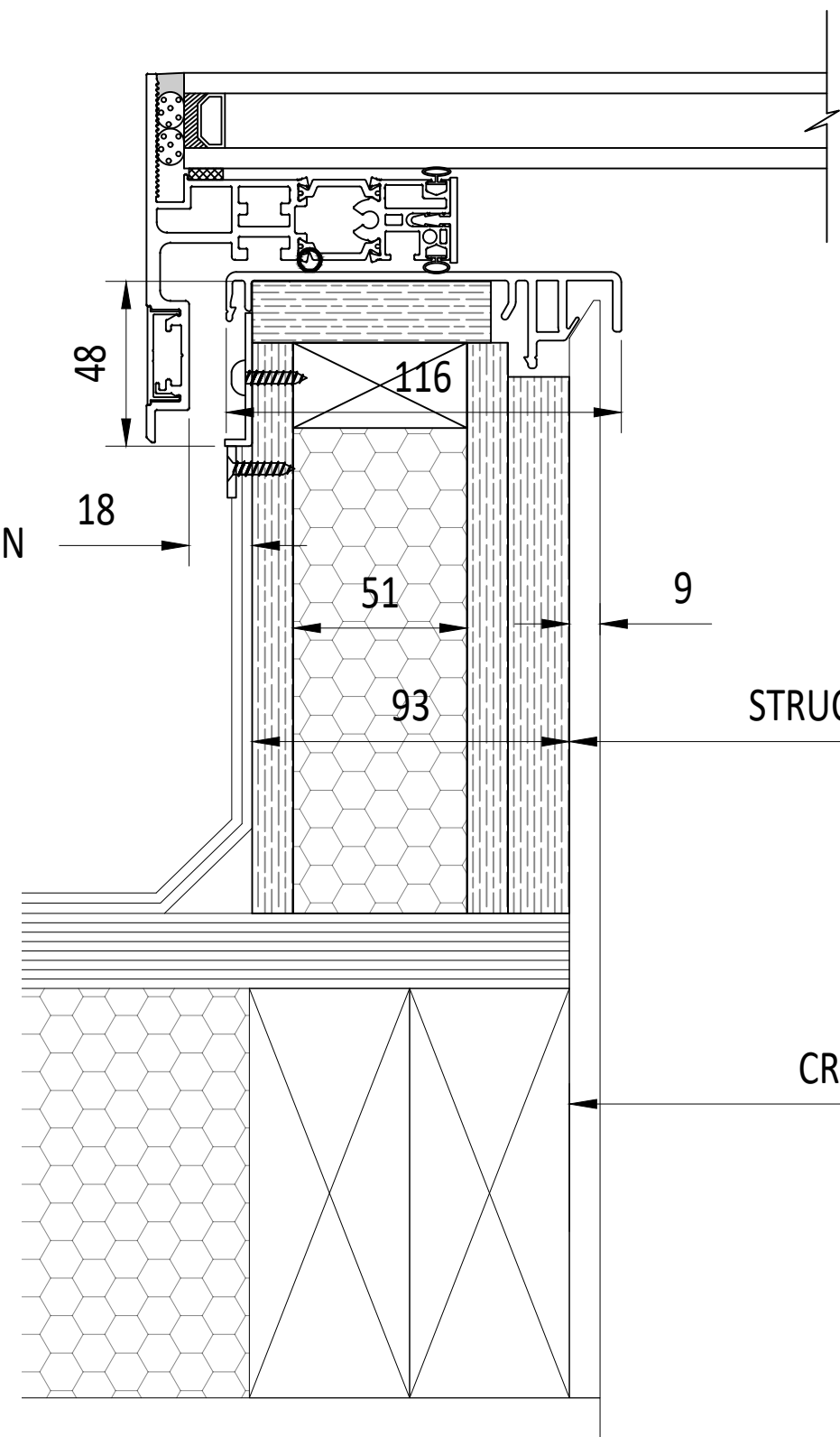
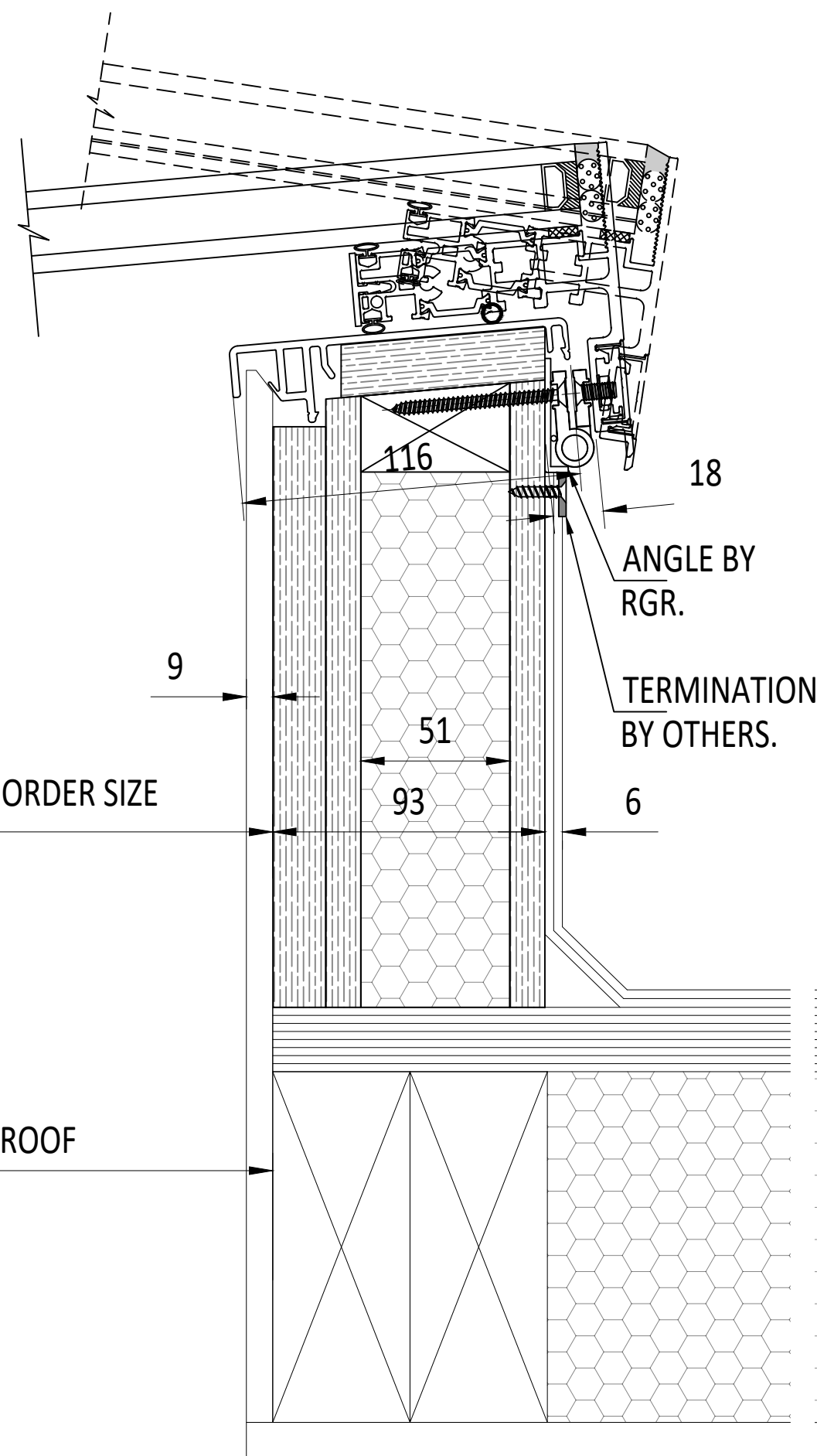
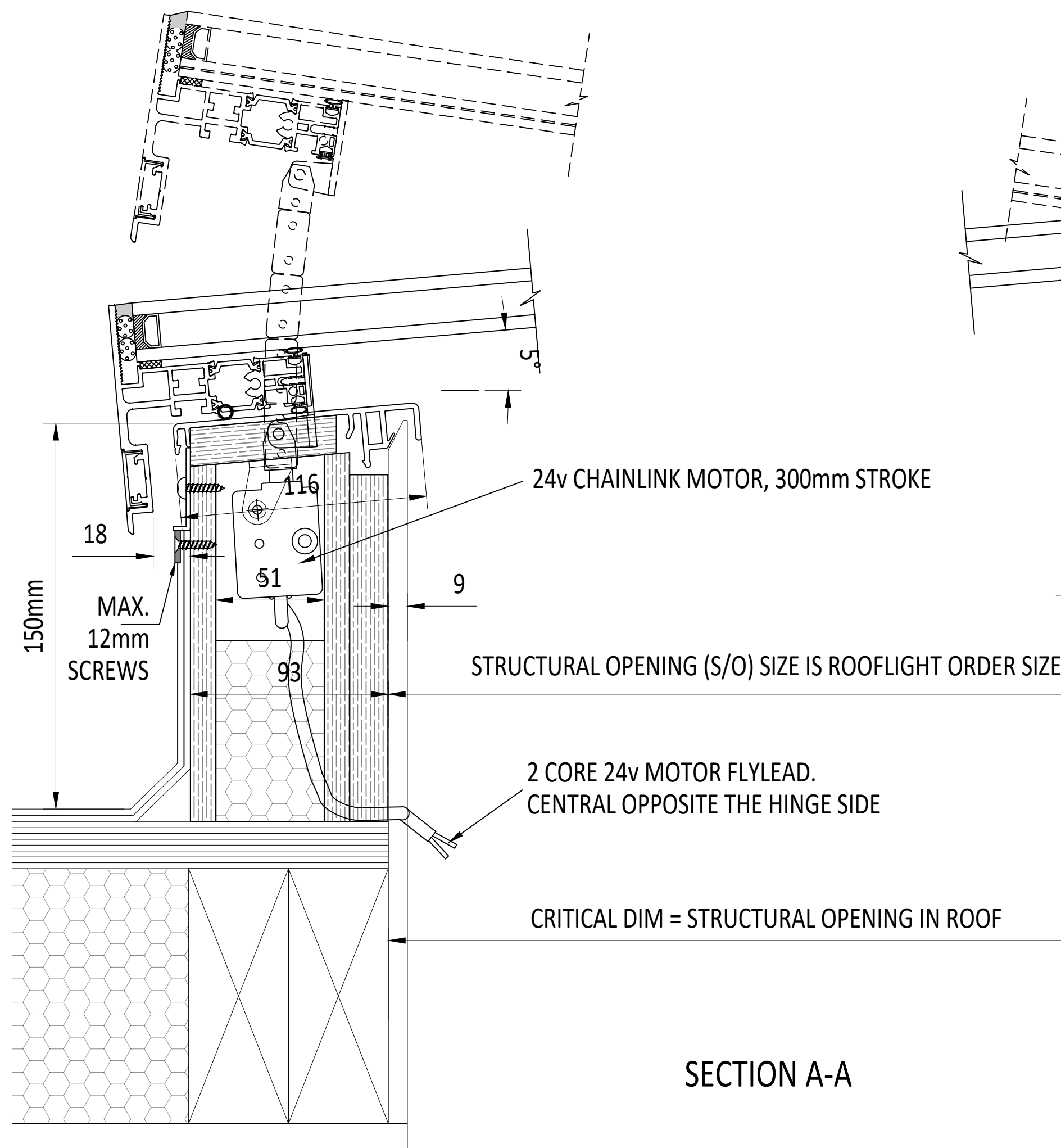
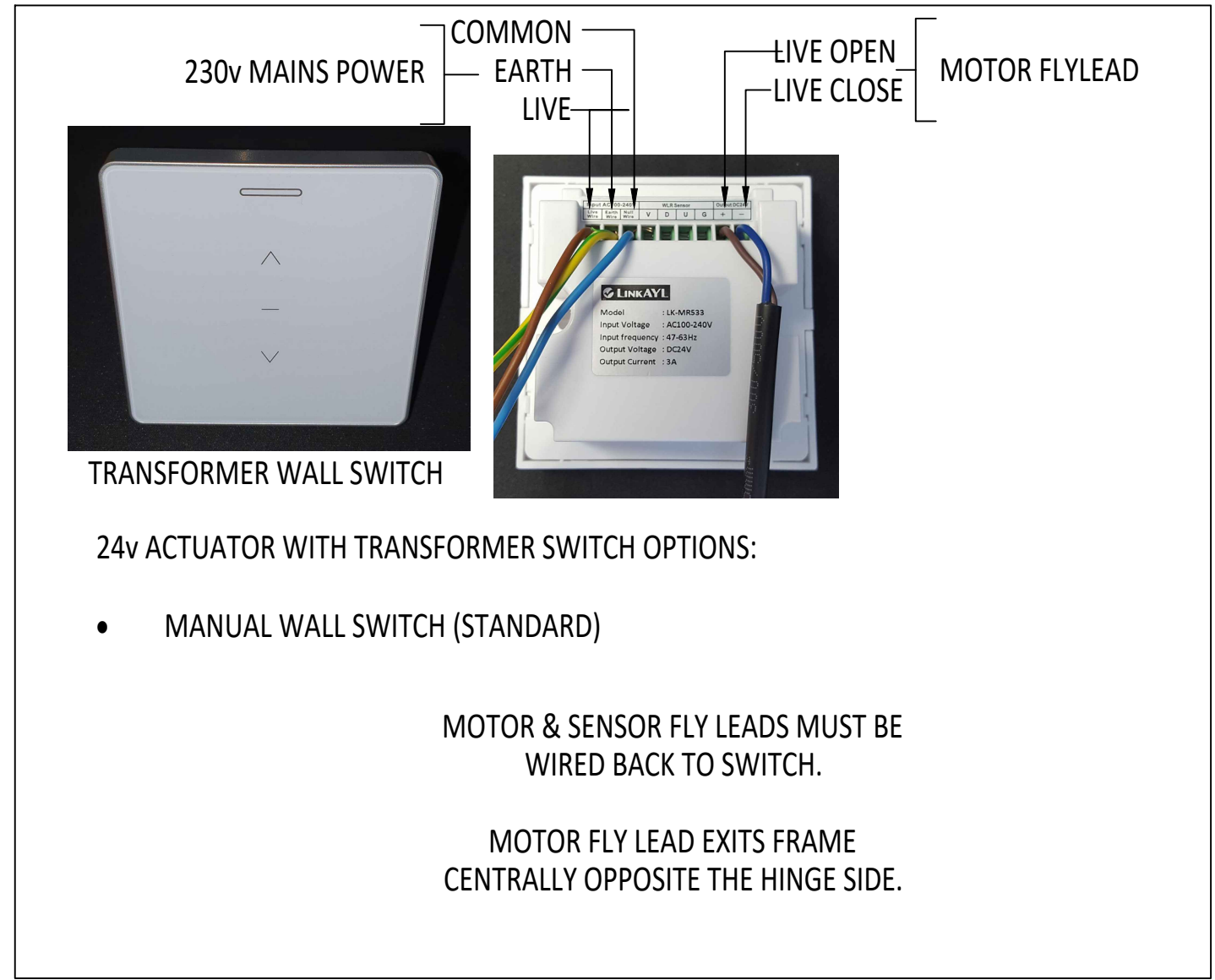
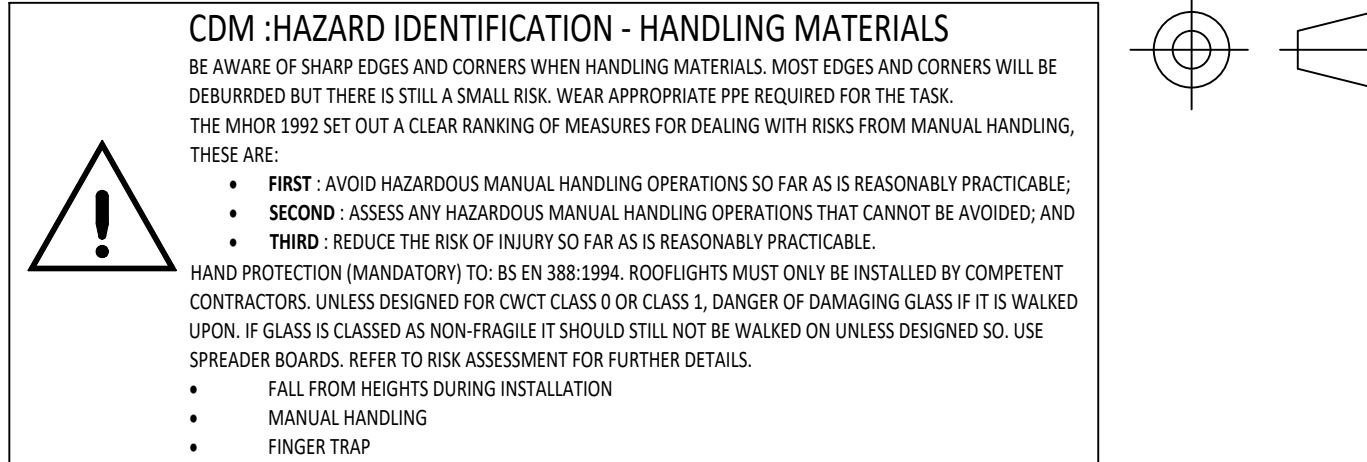
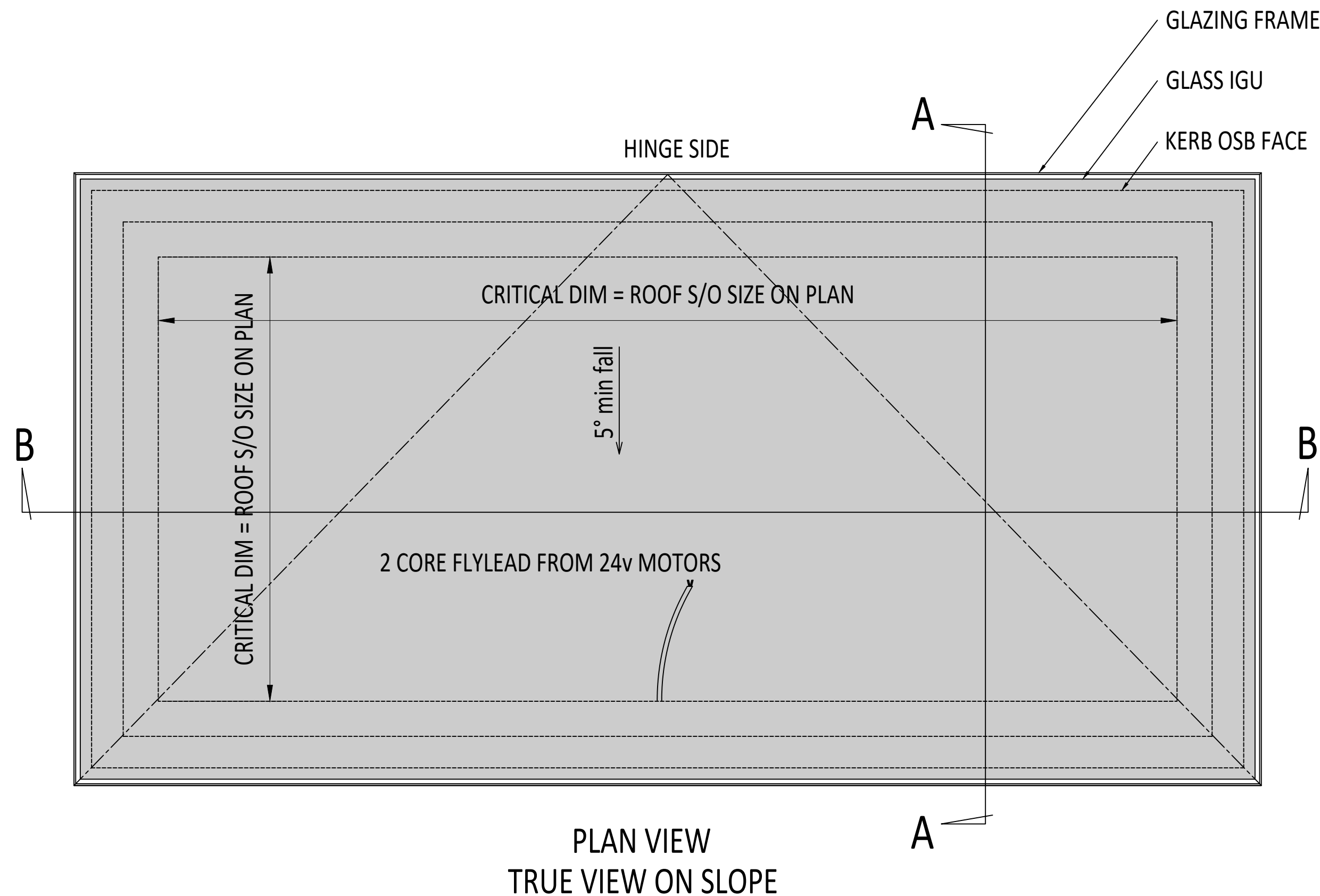
GLASS BONDED TO FRAME WITH GLAZING SECURITY TAPE & SILICONE.


MIN. 5° FALL RECOMMENDED TO HELP SHED WATER. LARGER UNITS MAY REQUIRE STEEPER PITCHES, CLIENT RESPONSIBLE FOR FINAL PITCH. MAX THICKNESS ROOF FINISH 6mm. PLEASE INFORM RGR IF YOUR FINISH EXCEEDS THIS.

DESIGN LOADS: 750N/m<sup>2</sup> WIND 640N/m<sup>2</sup> SNOW AS STANDARD  
OTHER LOADS TO BE SPECIFIED BY CLIENT.

TIMBER SUSTAINABLY SOURCED FROM FSC MANAGED FORESTS, AND RECLAIMED TIMBER

MOTORS ARE 24v. ONLY USE SWITCHES AND CONTROLS SUPPLIED BY RGR. ALL ELECTRICAL COMMISSIONING AND CONNECTION TO BUILDING POWER BY OTHERS.



IF IN DOUBT ASK DO NOT SCALE  	IT IS THE RESPONSIBILITY OF THE KERB DESIGNER TO ENSURE THE KERB WILL BE STRUCTURALLY ADEQUATE TO HOLD THE ROOFLIGHT. KERBS SHOWN ON THESE DRAWINGS ARE FOR ILLUSTRATION PURPOSES ONLY.	The manufacturer would advise an installation will minimum pitch of 5° for rooflight units to minimize water pooling. Whilst the product can be installed flat without detriment to the warranty, the manufacturer cannot be held responsible for any excessive pooling of water to the surface of the rooflight, post installation, if installed without an adequate fall. Larger units may require a greater fall. The final decision on amount of fall required must be made by the client and relayed to the installer.	THIS DRAWING MUST NOT BE COPIED OR PASSED TO A THIRD PARTY WITHOUT WRITTEN CONSENT FROM THE MANUFACTURER.	CHECKED	R. P.	TOLERANCE UNLESS OTHERWISE STATED	±5	MATERIAL	ALUMINIUM, TIMBER, GLASS							Roofglaze Rooflights Ltd, 11 Howard Road, Eaton Socon, St Neots, Cambs, PE19 8ET Telephone 01480 474797	DRAWING N°.	RGR-HV-23-398	REV	ROOFGLAZE														
				DATE	16-10-2023	DIMENSIONS IN	MM							FINISH	MARINE GRADE POLYESTER POWDER COAT COLOUR T.B.C. RAL 9005 BLACK or RAL 7016 ANTHRACITE GREY, 30% GLOSS (MATT)							TITLE:  SKYWAY COMPLETE HINGED ON RGR 150 TIMBER KERB	SIZE  A 1	Lighting by nature™										
				DRAWN	D. P.			SCALE	1:2, 1:7 @ A1												REV				AMENDMENTS							SIGNED	CHECKED	DATE
				DATE	16-10-2023																													