

NOTES

X NUMBER REQUIRED

GLASS SPEC:
OUTER : HST TOUGHENED GLASS
CAVITY : 16mm ARGON FILLED + WARM EDGE SPACER + DC3363 UV
RESISTANT SILICONE EDGE SEAL
INNER : HST TOUGHENED OR 8.8mm LAMINATED GLASS + LOW E
COATING

- LIGHT TRANSMISSION = 78 %
- CENTRE PANE U VALUE = 1.1 W/m².K
- SOLAR G VALUE = 0.63
- ACOUSTIC REDUCTION = 34 (6/6) 39 (6/8.8) Rw dB
- AIR PERMEABILITY = CWCT CLASS A4
- WEATHER RESISTANCE = CWCT CLASS A7
- WIND RESISTANCE = CWCT CLASS E2400
- WEIGHT = SIZE DEPENDANT
- DOWSIL 3363 UV RESISTANT SILICONE EDGE SEALS TO IGU
- DOWSIL 791 UV RESISTANT EDGE SEALS TO FRAME
- AA FIRE-RATED: AA DESIGNATION (NATIONAL CLASS) OR bROOF (T4)
- EUROPEAN CLASS AND EURO CLASS A1 NON-COMBUSTIBLE
- LOADS = 750N/m² WIND & 640N/m² SNOW

ROOFLIGHT ORDER SIZE = OVERALL FINISHED AND WEATHER KERB DIMS

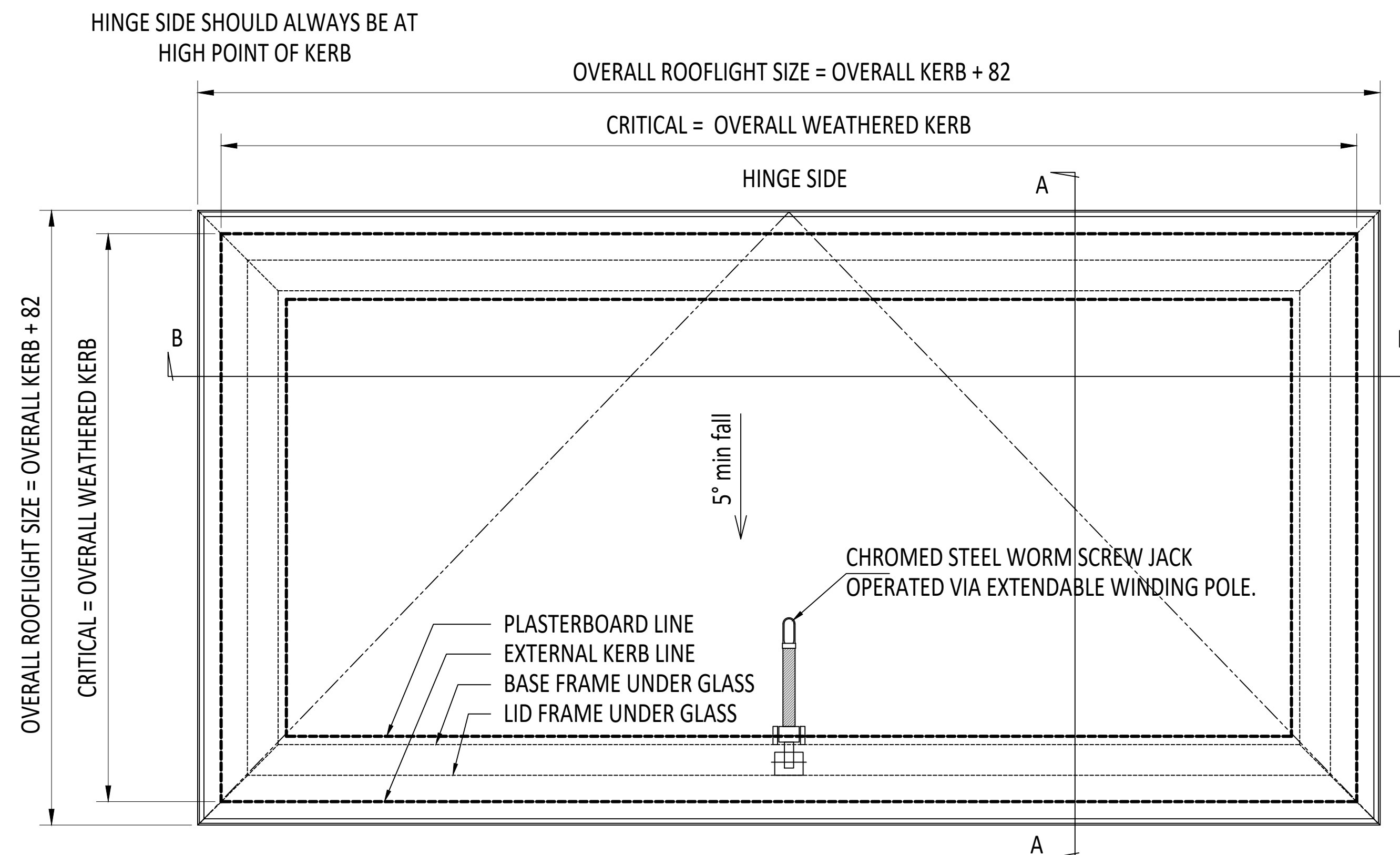
GLASS BONDED TO FRAME WITH GLAZING SECURITY TAPE ILLBRUCK TN136

KERB DETAILS SHOWN INDICATIVE, DETAILED DESIGN BY OTHERS TO MEET CURRENT BUILDING REGS. AN APPROVED DOCUMENT PART L COMPLIANT FULLY INSULATED TIMBER KERB IS AVAILABLE FROM ROOFGLAZE ROOFLIGHTS LTD.

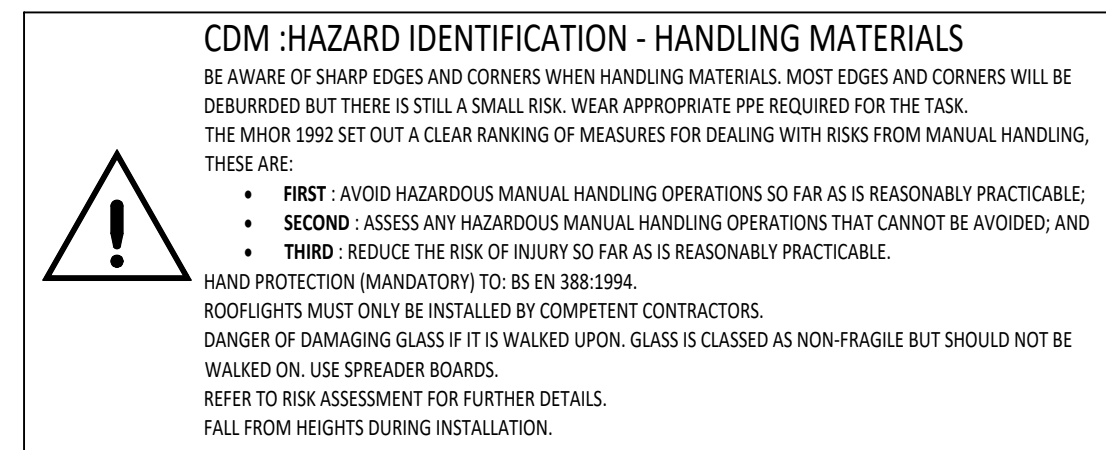
MIN. 5° FALL RECOMMENDED TO HELP SHED WATER. LARGER UNITS MAY REQUIRE
STEEPER PITCHES. FINAL DECISION BY OTHERS.

PRODUCT U-VALUE = AS LOW AS $0.8 \text{ W/m}^2\text{K}$ (u-values are size dependant)

ROOFLIGHT OPERATED VIA A TELESCOPIC WINDING POLE & CHROME WORM SCREW.



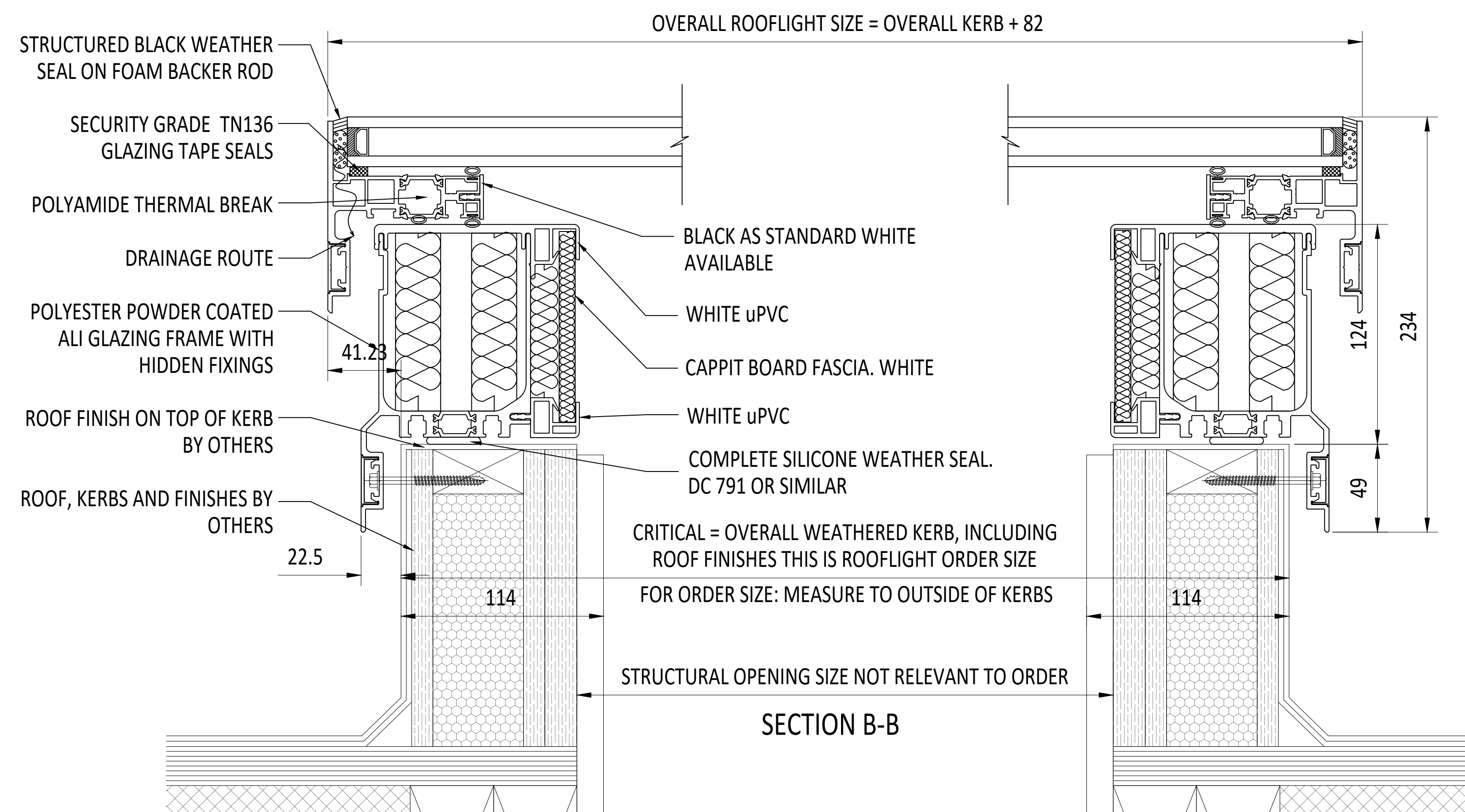
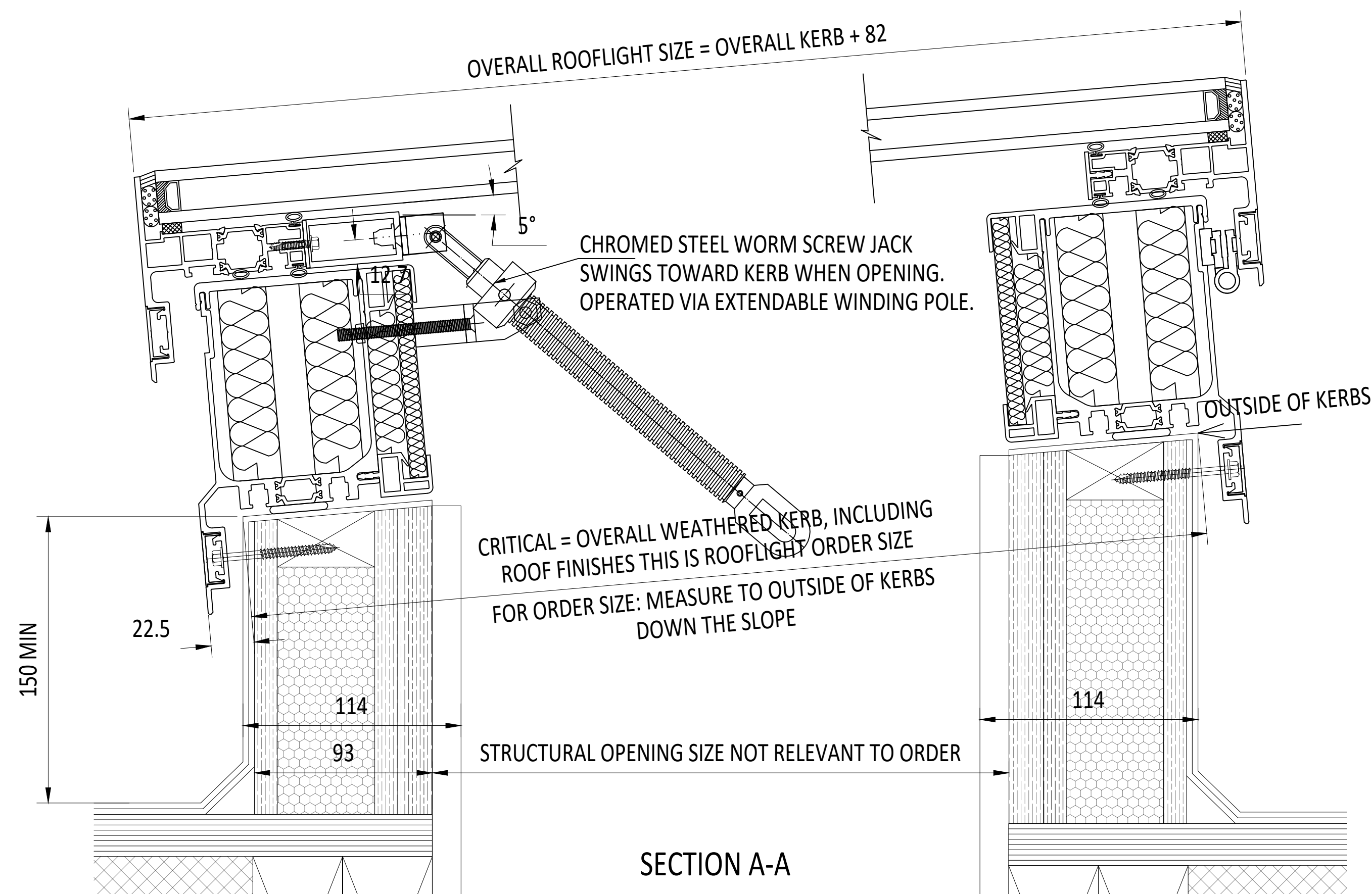
EXTERNAL PLAN VIEW
TRUE VIEW ON SLOPE




KERB DETAILS SHOWN INDICATIVE
ONLY. DETAILED DESIGN BY OTHERS



WORMGEAR SCREW JACK & POLE OPERATION



IF IN DOUBT ASK DO NOT SCALE 	IT IS THE RESPONSIBILITY OF THE KERB DESIGNER TO ENSURE THE KERB WILL BE STRUCTURALLY ADEQUATE TO HOLD THE ROOFLIGHT. THESE DRAWINGS ARE FOR ILLUSTRATION PURPOSES ONLY.	The manufacturer would advise an installation with a minimum pitch of 5° for rooflight units to minimize water pooling. Whilst the product can be installed flat without detriment to the warrantee, the manufacturer cannot be held responsible for any excessive pooling of water to the surface of the rooflight, post installation. If installed without an adequate fall, larger units may require a greater fall. The final decision on amount of fall required must be made by the client and relayed to the installer.	THIS DRAWING MUST NOT BE COPIED OR PASSED TO A THIRD PARTY WITHOUT THE WRITTEN CONSENT FROM THE MANUFACTURER.	CHECKED	D.PUGH	TOLERANCE UNLESS OTHERWISE STATED	±5	MATERIAL	ALUMINIUM + GLASS								Roofglaze Rooflights Ltd, 11 Howard Road, Eaton Socon, St Neots, Cambs. PE19 8ET Telephone 01480 474797	DRAWING N°		REV	ROOFGLAZE	
				DATE	07-06-2022	DIMENSIONS IN	MM	FINISH	MARINE GRADE POLYESTER POWDER COAT OPTIONS: RAL 7016 ANTHRACITE GREY, RAL 9005 BLACK, 30% GLOSS									TITLE: SKYWAY MANUAL HINGED FLATGLASS KERBS BY OTHERS	RGR-HV-23-301	SIZE A 1	Lighting by nature™	
				DRAWN	R.P.			SCALE	1:2, 1:7 @ A1													
				DATE	07-06-2022																	
						REV	AMENDMENTS		SIGNED	CHECKED	DATE											