

NOTES

X No. REQUIRED

GLASS SPEC:  
OUTER : 6mm HST TOUGHENED GLASS  
CAVITY : 16mm ARGON FILLED + WARM EDGE SPACER + DC3363 UV RESISTANT SILICONE EDGE SEAL  
INNER : 6mm HST TOUGHENED OR 8.8mm LAMINATED GLASS + GROUND EDGES + LOW E COATING  
*THE MANUFACTURER HIGHLY RECOMMENDS A CWCT CLASS 1 OR CLASS 2 NON-FRAGILE OPTION FOR MOST ROOFLIGHTS MOST GLASS SPECS ARE AVAILABLE, CONTACT SALES TO DISCUSS*

- LIGHT TRANSMISSION = 79.3 % (6/6). 78.7 % (6/8.8)
- GLASS CENTRE PANE U VALUE = 1.1 W/m².K
- SOLAR G VALUE = 0.58 (SOLAR CONTROL OPTIONS AVAILABLE FOR LOWER G VALUES)
- GLASS ACOUSTIC REDUCTION =  $R_w(C;Ctr) = 33(-1;-5)$  dB (6/6).  $R_w(C;Ctr) = 38(-1;-5)$  dB (6/8.8).
- AIR PERMEABILITY = CWCT CLASS A4
- WEATHER RESISTANCE = CWCT CLASS A7
- WIND RESISTANCE = CWCT CLASS E2400
- AA FIRE-RATED: AA DESIGNATION (NATIONAL CLASS) OR BROOF (T4) EUROPEAN CLASS
- WEIGHT = xx KG PER PANEL. xx KG TOTAL. (1m x 1m WITH 6/6 GLASS WEIGHS 48 KG)
- PRODUCT  $U_d$  VALUE = AS LOW AS 0.5 W/m².K.

INTERNAL OPENING SIZE RELEVANT TO GLAZING BAR DESIGN. YOU MUST SEND US KERB THICKNESS.

GLASS BONDED TO GLAZING FRAME WITH GLAZING SECURITY TAPE.

KERB DETAILS SHOWN INDICATIVE, DETAILED DESIGN BY OTHERS TO MEET CURRENT BUILDING REGS.  
AN APPROVED DOCUMENT PART L COMPLIANT FULLY INSULATED TIMBER KERB IS AVAILABLE FROM ROOFLAZE ROOFLIGHTS LTD.

MIN. 5° FALL RECOMMENDED TO HELP SHED WATER. LARGER UNITS MAY REQUIRE STEEPER PITCHES.  
FINAL DECISION BY OTHERS.

MAX DOWN SLOPE = 4.0m SELF SUPPORTING SPAN. THE GREATER THE SPAN THE DEEPER THE GLAZING BOX. 50mm MINIMUM DEPTH TO 100mm MAXIMUM DEPTH.

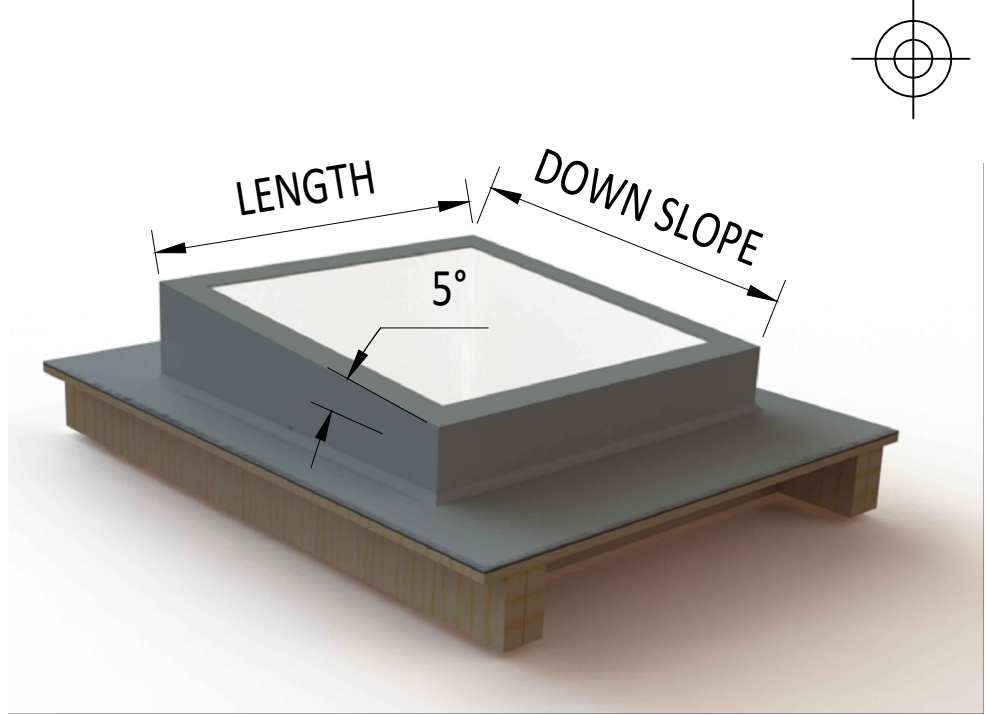
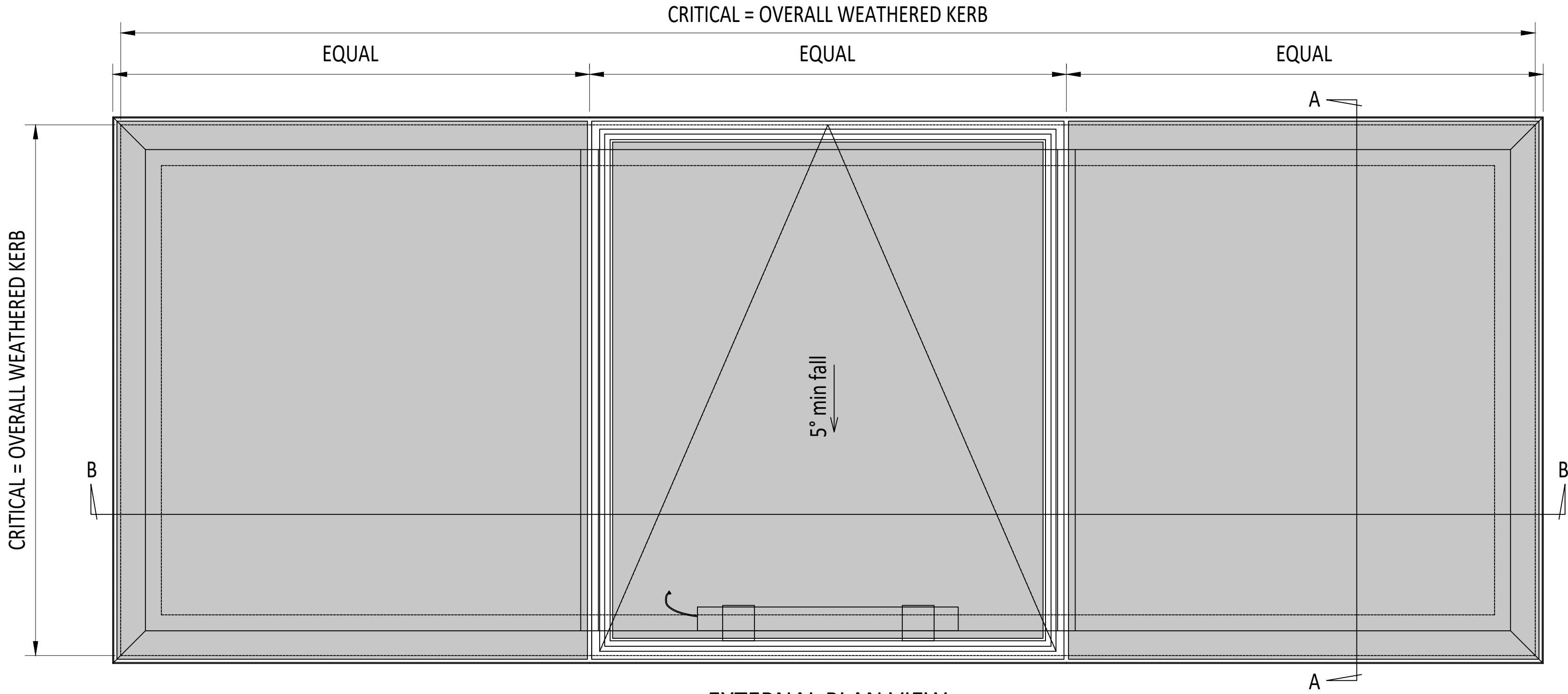
DESIGN LOADS: 750N/m² WIND 640N/m² SNOW AS STANDARD  
OTHER LOADS TO BE SPECIFIED BY CLIENT.

SILICONE **MUST** BE APPLIED TO TOP OF GLAZING BARS AS WELL AS BETWEEN GLASS IGU'S. A FULL SEAL MUST BE ACHIEVED TO PROVIDE ADEQUATE DRAINAGE.

END OF GLAZING BOXES SHOULD BE SUPPORTED ON KERBS, BY OTHERS.

GLAZING BAR DESIGN IS DEPENDANT UPON A NUMBER OF FACTORS; GLASS STRENGTH, GLASS WEIGHT, KERB SPAN, DESIGN LOADS, AND BAY CENTRES. CONTACT THE MANUFACTURER FOR EXACT SIZES.

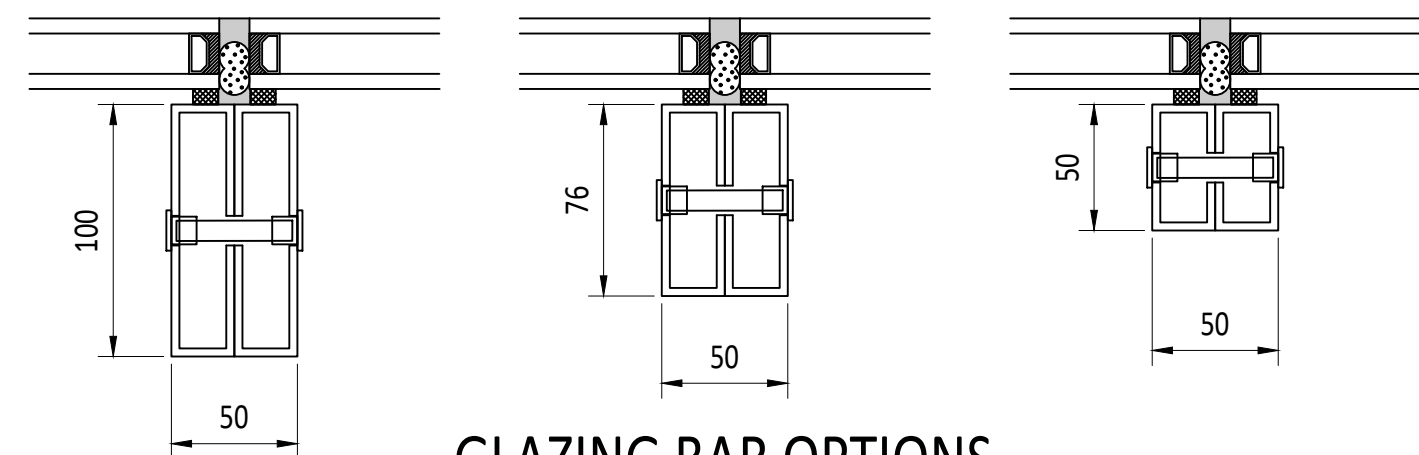
24v ACTUATORS. VARIOUS SWITCH AND SENSOR OPTIONS AVAILABLE. ELECTRICAL COMMISSIONING BY OTHERS.



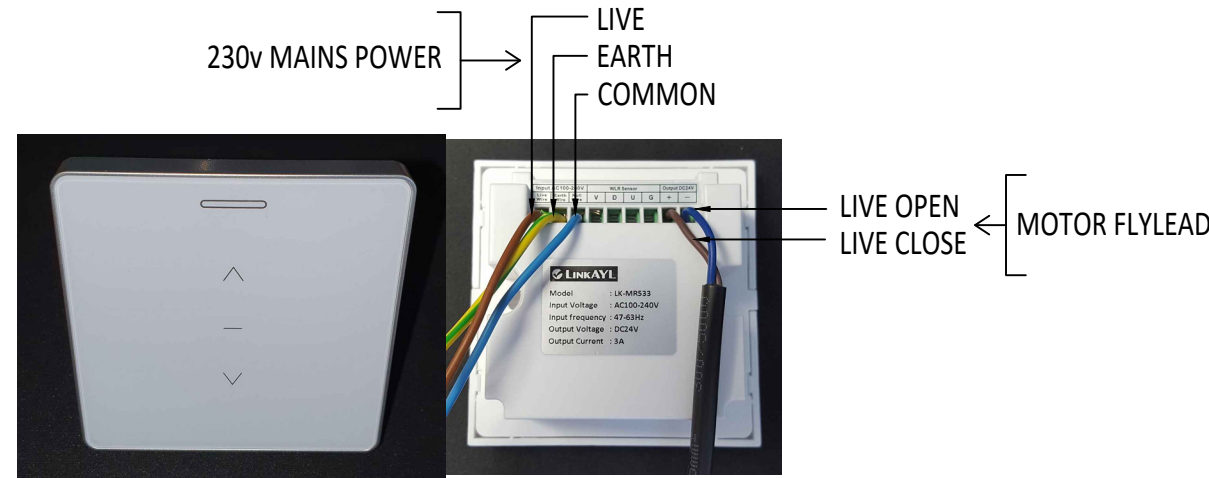
3D EXAMPLE OF KERB



GENERIC 3D RENDER IMAGING OF FRAME



GLAZING BAR OPTIONS  
(KERB SIZE & GLASS DEPENDANT)



OPTIONAL



OPTIONAL

CDM :HAZARD IDENTIFICATION - HANDLING MATERIALS

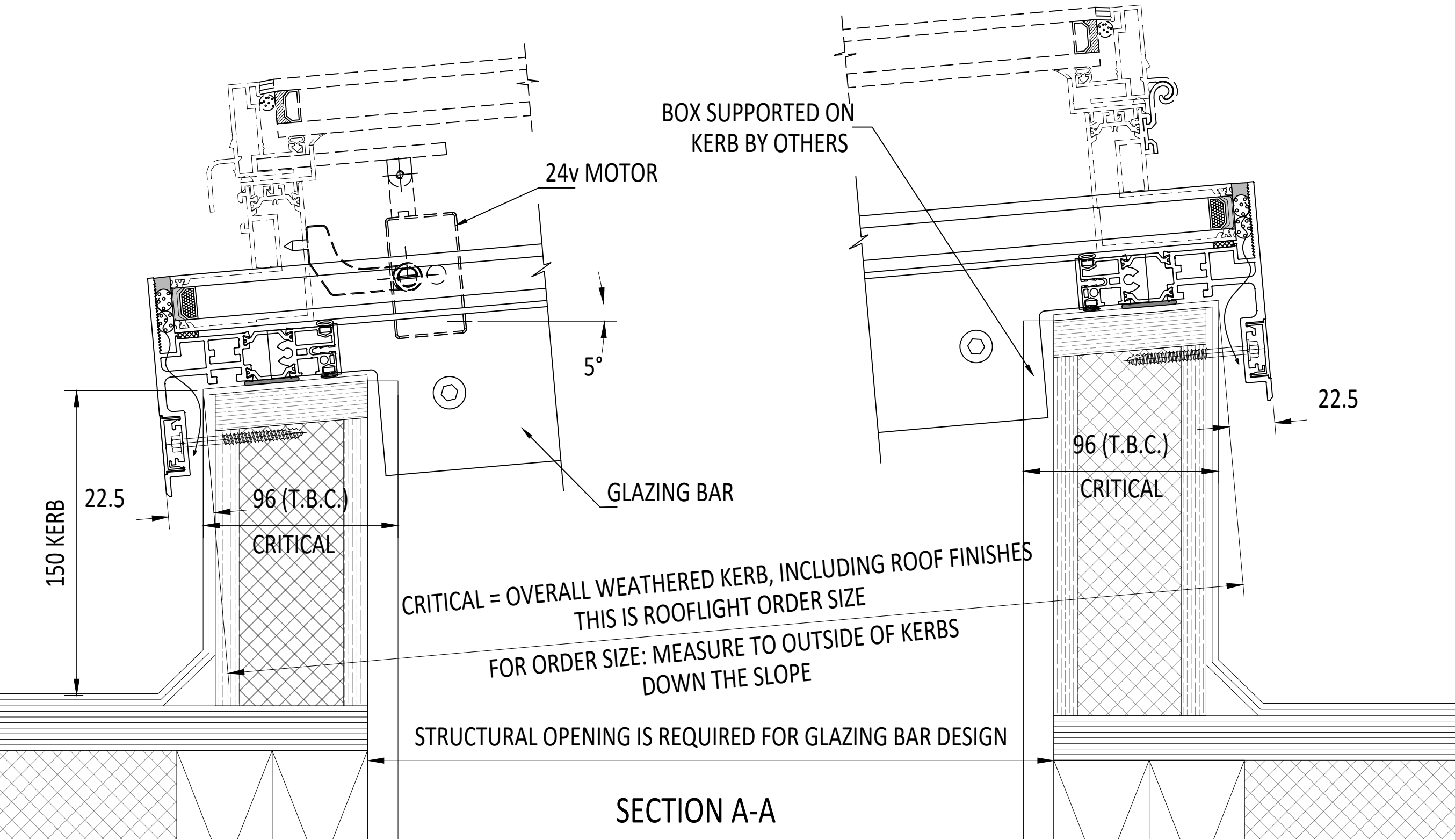
BE AWARE OF SHARP EDGES AND CORNERS WHEN HANDLING MATERIALS. MOST EDGES AND CORNERS WILL BE DEBURRED BUT THERE IS STILL A SMALL RISK. WEAR APPROPRIATE PPE REQUIRED FOR THE TASK. THE MHOR 1992 SET OUT A CLEAR RANKING OF MEASURES FOR DEALING WITH RISKS FROM MANUAL HANDLING, THESE ARE:

- FIRST - AVOID HAZARDOUS MANUAL HANDLING OPERATIONS SO FAR AS IS REASONABLY PRACTICABLE;
- SECOND - ASSESS ANY HAZARDOUS MANUAL HANDLING OPERATIONS THAT CANNOT BE AVOIDED; AND
- THIRD - REDUCE THE RISK OF INJURY SO FAR AS IS REASONABLY PRACTICABLE.

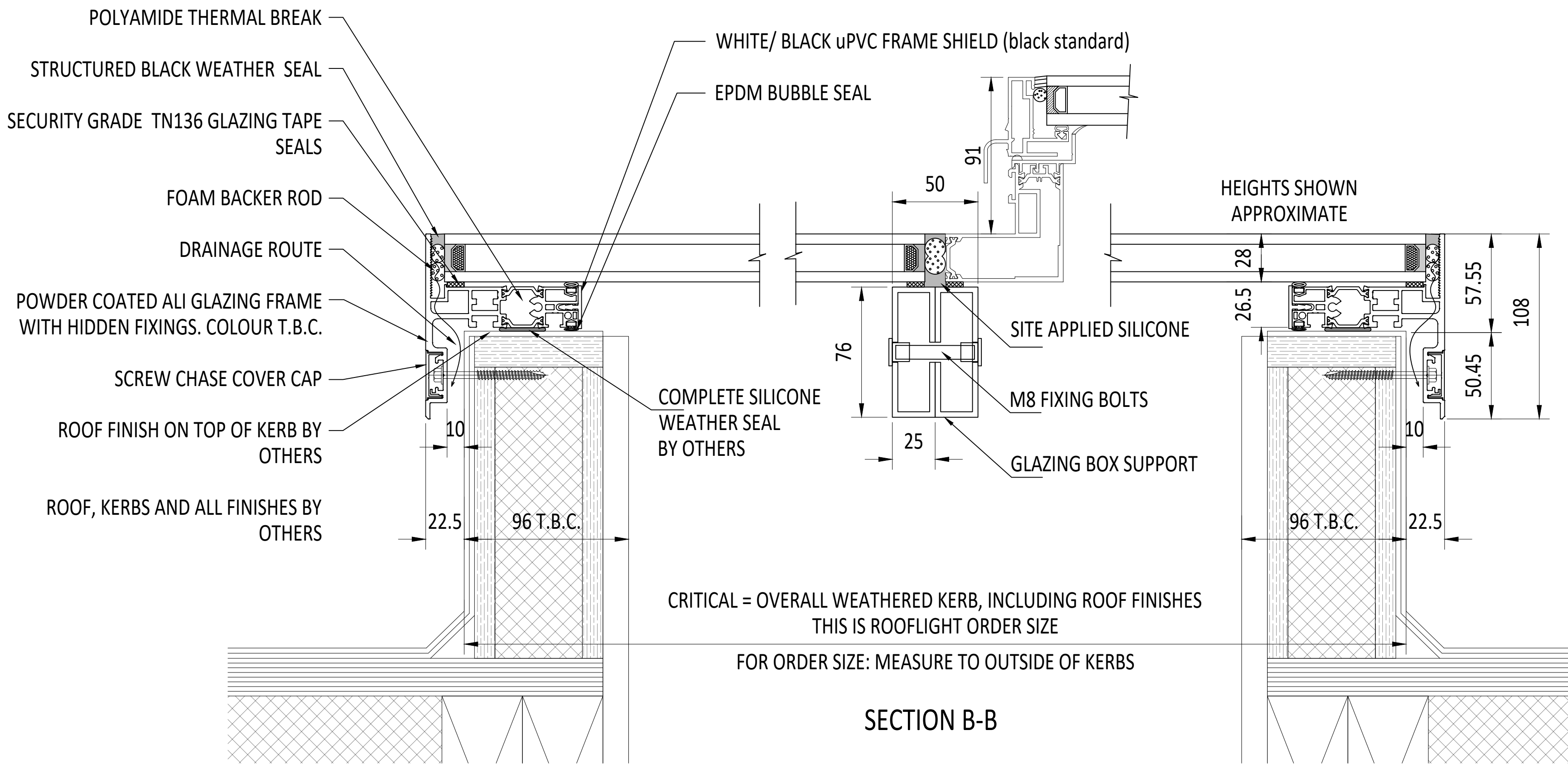
HAND PROTECTION (MANDATORY) TO: BS EN 388:1994.

ROOFLIGHTS MUST ONLY BE INSTALLED BY COMPETENT CONTRACTORS. DANGER OF DAMAGING GLASS IF IT IS WALKED UPON. GLASS IS CLASSED AS NON-FRAGILE BUT SHOULD NOT BE WALKED ON. USE SPREADER BOARDS. REFER TO RISK ASSESSMENT FOR FURTHER DETAILS.

KERB DETAILS SHOWN INDICATIVE ONLY. DETAILED DESIGN BY OTHERS



SECTION A-A



SECTION B-B

IF IN DOUBT ASK DO NOT SCALE	IT IS THE RESPONSIBILITY OF THE KERB DESIGNER TO ENSURE THE KERB WILL BE STRUCTURALLY ADEQUATE TO HOLD THE ROOFLIGHT. KERBS SHOWN ON THESE DRAWINGS ARE FOR ILLUSTRATION PURPOSES ONLY.	The manufacturer would advise an installation with a minimum pitch of 5° for rooflight units to minimize water pooling. Whilst the product can be installed flat without detriment to the warrantee, the manufacturer cannot be held responsible for any excessive pooling of water to the surface of the rooflight, post installation, if installed without an adequate fall, larger units may require a greater fall. The final decision on amount of fall required must be made by the client and relayed to the installer.	THIS DRAWING MUST NOT BE COPIED OR PASSED TO A THIRD PARTY WITHOUT WRITTEN CONSENT FROM THE MANUFACTURER.	CHECKED	R. P.	TOLERANCE UNLESS OTHERWISE STATED	±5	MATERIAL	ALUMINIUM + GLASS									Roofglaze Rooflights Ltd, 11 Howard Road, Eaton Socon, St Neots, Cambs, PE19 8ET Telephone 01480 474797	DRAWING N°.	RGR-MP-24-207	REV	ROOFLAZE					
				DATE	09-03-2024	DIMENSIONS IN	MM																				
				DRAWN	D. P.	SCALE	1:2, 1:10 @ A1																				
				DATE	09-03-2024					FINISH	MARINE GRADE POWDERCOAT																
									FRAME COLOUR: T.B.C													SIZE	A1	Lighting by nature™			
									GLAZING BAR COLOUR: T.B.C																		
									30% GLOSS (MATT)																		
										REV	AMENDMENTS								SIGNED	CHECKED	DATE						